

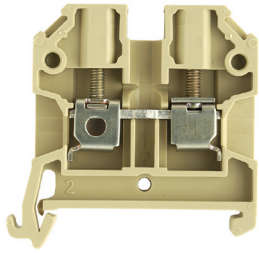


Modular feed-through terminals		
TS 35 / PA	A.2	- A.6
TS 35 / KrG	A.7	- A.10
Spring Loaded Terminal		
TS 35 / PA	A.11	
Double Deck Terminal		
TS 35 / PA	A.12	- A.13
Modular PE terminals		
TS 35 / PA	A.14	- A.17
Disconnect terminals		
TS 35 / PA	A.18	- A.19
TS 35 / KrG	A.20	- A.21
Fuse terminals		
TS 35 / PA	A.22	- A.23
TS 35 / KrG	A.24	- A.27
Fuse inserts and gauge rings for Weidmüller fuse terminals	A.28	- A.29
Installation terminals		
TS 35 / PA	A.30	- A.31
Modular disconnect test terminals		
TS 35 / KrG	A.32	- A.33
Feed-through terminals for thermocouples		
TS 35 / PA	A.34	
Modular terminals with screwless connection		
With tab connection		
TS 35 / PA	A.36	- A.40
With solder connection		
TS 35 / PA	A.41	
Special terminal - SAKG		
TS 35 / KRG	A.42	- A.47
Stud Terminal - KST		
TS 35 / PA	A.48	- A.49
Modular terminals with electronic components		
TS 45 / PA	A.50	- A.57

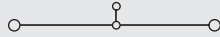
Modular feed-through terminals

SAK 4

4 mm²



6.5 x 45 x 44
41 / 6
0.13 ... 6



IEC 60947-7-1

IEC	UL	CSA	EN 50019
800	600	600	
32	30	36	
4	AWG 22...12	AWG 26...10	
	8 / 3		
	A4 / V2		



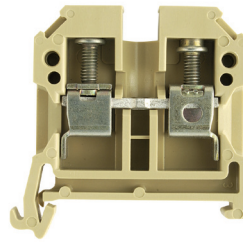
Rated connection	Additional connection
0.5...6 / 0.5...4	
0.5...4 / 0.5...4	
0.5...1.0 (M3)	
12 / 3.5 x 0.6	

1.5...1.5
0.5...1.5

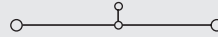
To use twin ferrules is the rated voltage 630/690 V.

SAK 6

6 mm²



8 x 45 x 44
57 / 10
0.33 ... 10



IEC 60947-7-1

IEC	UL	CSA	EN 50019
800	600	600	
41	40	47	
6	AWG 22...8	AWG 20...8	
	8 / 3		
	A5 / V2		

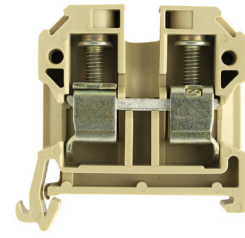


Rated connection	Additional connection
0.5...10 / 0.5...6	
0.5...10 / 0.5...6	
0.8...1.6 (M3.5)	
12 / 4.0 x 0.8	

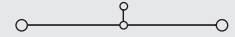
To use twin ferrules is the rated voltage 630/690 V.

SAK 10

10 mm²



10 x 45 x 51.5
76 / 16
1.5 ... 16



IEC 60947-7-1

IEC	UL	CSA	EN 50019
800	600	600	
57	60	65	
10	AWG 14...6	AWG 14...6	
	8 / 3		
	B6 / V2		



Rated connection	Additional connection
1.5...10 / 1.5...16	
1.5...16 / 1.5...10	
2.0...2.4 (M4)	
12 / 5.5 x 1.0	

Tightening torque 2 Nm for 10 and 16 mm² stranded and AWG 6/7 wire.

Type	Qty.	Order No.
SAK 4/35	100	0443660000
SAK 4/35 BL	100	0443680000

Type	Qty.	Order No.
SAK 6/35	100	0380560000
SAK 6/35 BL	100	0380580000

Type	Qty.	Order No.
SAK 10/35	100	0443760000
SAK 10/35 BL	100	0443780000

Type	Current [A]	Qty.	Order No.
Q 2 SAK4	41	50	0336700000
Q 3 SAK4	41	50	0336800000
Q 4 SAK4	41	50	0336900000
Q 10 SAK4	41	20	0368800000

Type	Current [A]	Qty.	Order No.
Q 2 SAK6N	57	50	0456700000
Q 3 SAK6N	57	50	0456800000
Q 4 SAK6N	57	50	0456900000
Q 10 SAK6N	57	20	0457000000

Type	Current [A]	Qty.	Order No.
Q 2 SAK10	57	50	0457100000
Q 3 SAK10	57	50	0457200000
Q 4 SAK10	57	50	0457300000
Q 10 SAK10	57	20	0457400000

VL 2 SAK4	50	0197000000
VH 19/5/3.5 SAK4-16	50	0285100000
BFSC M3X25	100	0292500000

VL 2 SAK6N/SAKT	50	0194700000
VH 19/5/3.5 SAK4-16	50	0285100000
BFSC M3X25	100	0292500000

VL 2 SAK6/10/SAKB	50	0135900000
VH 19/5/3.5 SAK4-16	50	0285100000
BFSC M3X25	100	0292500000

STB 14/D5/2.3/M3 SAK2.5	50	0168600000
PS 4 F.STB 4	20	0299600000

STB 14/D6/4/M3 SAK10	50	0169900000
PS 4 F.STB 4	20	0299600000

STB 14/D6/4/M3 SAK10	50	0169900000
PS 4 F.STB 4	20	0299600000

Width [mm]			
AP SAK4-10	1.5	20	0117960000
AP SAK4-10 BL	1.5	20	0117980000

Width [mm]			
AP SAK4-10	1.5	20	0117960000
AP SAK4-10 BL	1.5	20	0117980000

Width [mm]			
AP SAK4-10	1.5	20	0117960000
AP SAK4-10 BL	1.5	20	0117980000

Width [mm]			
TW 4 SAK4-10	1.5	20	0130160000
TW 4 SAK4-10 BL	1.5	20	0130180000
TSCH 1	2	100	0319160000

Width [mm]			
TW 4 SAK4-10	1.5	20	0130160000
TW 4 SAK4-10 BL	1.5	20	0130180000
TSCH 1	2	100	0319160000

Width [mm]			
TW 4 SAK4-10	1.5	20	0130160000
TW 4 SAK4-10 BL	1.5	20	0130180000
TSCH 1	2	100	0319160000

AD 4 SAK4	50	0285300000
BFSC M3X22 PA/RT	100	0128900000

AD 4 SAK6N	50	0196600000
BFSC M3X22 PA/RT	100	0128900000

AD 4 SAK10	50	0178600000
BFSC M3X22 PA/RT	100	0128900000

DEK 6,5

DEK 8 / DEK 5

DEK 5

Modular feed-through terminals

TS 35 / PA

SAK 16

SAK 35/35

35 mm²

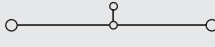
TS 35 / PA

A

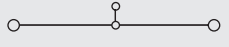
When using ATEX certified components in hazardous area applications the installation instructions and the rated data for accessories in the technical appendix must be considered.

Width/Length/Height with TS35x7.5	mm
Max. current / max. cond. cross-section	A/mm ²
Max. clamping range	mm ²

12 x 50 x 57.5
76 / 16
2.5 ... 16



18 x 58 x 60
150 / 50
2.5 ... 50



Technical data

Rated data	
Rated voltage	V
Rated current	A
Rated cross-section	mm ²
Rated impulse voltage / Pollution severity	kV/-
Plug gauge IEC 60-947-1 / flammability class acc. UL 94 Approvals	

Clampable conductors (H05V/H07V)	
Solid / stranded	mm ²
Flexible / flexible w. wire end ferrule	mm ²
Tightening torque range (clamping screw)	Nm
Stripping length / blade size	mm / -

2 clampable conductors of equal cross-section	
Solid / stranded	mm ²
Flexible / flexible w. wire end ferrule	mm ²

Information
Installation of the QL side by side use a TW/AP.

IEC 60947-7-1			
IEC	UL	CSA	EN 50019
1000	600	600	
76	80	87	
	AWG 12...6	AWG 10...6	
	8 / 3		
	B6		

Rated connection	Additional connection
2.5...16 / 4...16	
4...16 / 4...16	
2.0...2.4 (M4)	
15 / 5.5 x 1.0	

Information
Installation of the QL side by side use a TW/AP.

IEC 60947-7-1			
IEC	UL	CSA	EN 50019
800	600	600	
125	100	145	
35	AWG 12...2	AWG 12...2	
	8 / 3		
	B8 / V2		

Rated connection	Additional connection
2.5...16 / 4...50	
2.5...35 / 2.5...35	
4.0...5.0 (M6)	
18 / 6.5 x 1.2	

Information
Installation of the QL side by side use a TW/AP.

Order data


Version	Type	Qty.	Order No.
beige	SAK 16/35 PA	50	0380660000
blue	SAK 16/35 BL	50	0380680000

Information

Type	Qty.	Order No.
SAK 35/35	20	0380760000
SAK 35/35 BL	20	0380780000

Information

Accessories

Cross-connection, screwable	
	
2-pole	
3-pole	
4-pole	
10-pole	
Connecting sleeve	
Fixing screw	
Fuse cartridges	

Cross-connection saddle	
Cross-connection saddle	
Connecting sleeve	
Fixing screw	

Socket / Test plug	
Socket	
Test plug	

End plate	
beige	
blue	

Partition / Partition disc	
beige	
blue	
Partition disc	

Cover / fixing screw (plastic)	
Cover	
Fixing screw (plastic)	

Marking systems	
DEK 5	

Detailed information on all versions in chapter accessories.	

Type	Current [A]	Qty.	Order No.
Q 2 SAK16	76	50	0457500000
Q 3 SAK16	76	50	0457600000
Q 4 SAK16	76	50	0457700000
Q 10 SAK16	76	20	0457800000

Type	Current [A]	Qty.	Order No.
VL 2 SAK16/SAKA		50	0135800000
VH 19/5/3.5 SAK4-16		50	0285100000
BFSC M3X25		100	0292500000

Type	Current [A]	Qty.	Order No.
STB 14/D6/4/M3 SAK10		50	0169900000
PS 4 F.STB 4		20	0299600000

Type	Width [mm]	Qty.	Order No.
AP SAK16	1.5	20	0271160000
AP SAK16 BL	1.5	20	0271180000

Type	Width [mm]	Qty.	Order No.
TSCH 1		2	0319160000

Type	Current [A]	Qty.	Order No.
AD 4 SAK16		50	0518200000
BFSC M3X22 PA/RT		100	0128900000

Type	Current [A]	Qty.	Order No.
DEK 5			

Type	Current [A]	Qty.	Order No.
QL 2 SAK35	99	20	0123600000
QL 3 SAK35	99	20	0123700000
QL 4 SAK35	99	20	0123800000
QL 10 SAK35	99	20	0338600000
VH 17/8/5 SAK35		50	0267000000
BFSC M4X30		50	0267100000
SS M4 D 128-A 4		100	0136400000

Type	Current [A]	Qty.	Order No.
VL 2 SAK35		50	0124000000
VH 24.5/8/5 SAK35		50	0298700000
BFSC M4X35		50	0298900000

Type	Current [A]	Qty.	Order No.
STB 16/D7/4/M4 SAK35		50	0140200000
PS 4 F.STB 4		20	0299600000

Type	Width [mm]	Qty.	Order No.
AP SAK35/TW SAK16	1.5	10	0303660000
AP SAK35/TW SAK16 BL	1.5	10	0303680000

Type	Width [mm]	Qty.	Order No.
TW SAK35	1.5	20	0304360000

Type	Current [A]	Qty.	Order No.
AD 4 SAK35		50	0178700000
BFSC M4X32 PA/RT		100	0129100000

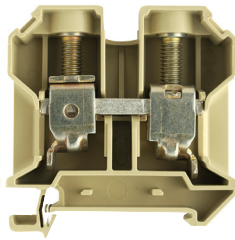
Type	Current [A]	Qty.	Order No.
DEK 5			

Modular feed-through terminals

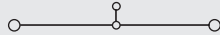
SAK 35/35/IK

35 mm²

Hexagon socket head screw



18 x 58 x 60
150 / 50
2.5 ... 50



IEC 60947-7-1

IEC	UL	CSA	EN 50019
800	600	600	
125	100	145	
35	AWG 12...2	AWG 12...2	
8 / 3			
B8 / V2			



Rated connection	Additional connection
2.5...16 / 4...50	
2.5...35 / 2.5...35	
4.0...6.0 (M 6)	
18 / S 4 (DIN 6911)	

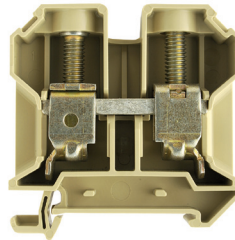
2.5...10 / 10...16
2.5...16 / 2.5...16

Installation of the QL side by side use a TW/AP.

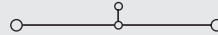
Type	Qty.	Order No.
SAK 35/35/IK	20	0582460000

SAK 35N/35

35 mm²



16 x 63 x 60
150 / 50
2.5 ... 50



IEC 60947-7-1

IEC	UL	CSA	EN 50019
1000	600	600	
125	105	120	
35	AWG 12...2	AWG 12...2	
8 / 3			
B8 / V2			



Rated connection	Additional connection
2.5...16 / 4...50	
2.5...35 / 1.5...35	
4.0...5.0 (M 6)	
18 / 6,5 x 1,2	

2.5...10 / 10...16
2.5...16 / 2.5...16

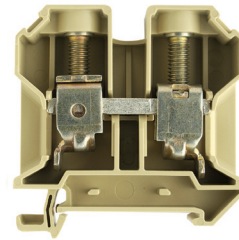
Installation of the QL side by side use a TW/AP.

Type	Qty.	Order No.
SAK 35N/35	20	0608260000

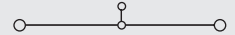
SAK 35N/35/IK

35 mm²

Hexagon socket head screw



16 x 63 x 60
150 / 50
2.5 ... 50



IEC 60947-7-1

IEC	UL	CSA	EN 50019
1000	600	600	
125	105	120	
35	AWG 12...2	AWG 12...2	
8 / 3			
B8 / V2			



Rated connection	Additional connection
2.5...16 / 4...50	
2.5...35 / 1.5...35	
4.0...6.0 (M 6)	
18 / S 4 (DIN 6911)	

2.5...10 / 10...16
2.5...16 / 2.5...16

Installation of the QL side by side use a TW/AP.

Type	Qty.	Order No.
SAK 35N/35/IK	20	0608360000

Type	Current [A]	Qty.	Order No.
QL 2 SAK35	99	20	0123600000
QL 3 SAK35	99	20	0123700000
QL 4 SAK35	99	20	0123800000
QL 10 SAK35	99	20	0338600000
VH 17/8/5 SAK35	50	50	0267000000
BFSC M4X30	50	50	0267100000
SS M4 D 128-A 4	100	100	0136400000
VL 2 SAK35	50	50	0124000000
VH 24.5/8/5 SAK35	50	50	0298700000
BFSC M4X35	50	50	0298900000
STB 16/D7/4/M4 SAK35	50	50	0140200000
PS 4 F.STB 4	20	20	0299600000
Width [mm]			
AP SAK35/TW SAK16	1.5	10	0303660000
AP SAK35/TW SAK16 BL	1.5	10	0303680000
Width [mm]			
TW SAK35	1.5	20	0304360000
AD 4 SAK35	50	50	0178700000
BFSC M4X32 PA/RT	100	100	0129100000
DEK 5			

Type	Current [A]	Qty.	Order No.
QL 2 SAK35N	99	50	0564900000
QL 3 SAK35N	99	50	0565000000
QL 4 SAK35N	99	50	0565100000
QL 10 SAK35N	99	20	0565200000
VH 17/8/5 SAK35	50	50	0267000000
BFSC M4X30	50	50	0267100000
SS M4 D 128-A 4	100	100	0136400000
STB 16/D7/4/M4 SAK35	50	50	0140200000
PS 4 F.STB 4	20	20	0299600000
Width [mm]			
AP SAK35/TW SAK16	1.5	10	0303660000
AP SAK35/TW SAK16 BL	1.5	10	0303680000
Width [mm]			
TW SAK35	1.5	20	0304360000
AD 4 SAK35N	50	50	0576700000
BFSC M4X32 PA/RT	100	100	0129100000
DEK 5			

Type	Current [A]	Qty.	Order No.
QL 2 SAK35N	99	50	0564900000
QL 3 SAK35N	99	50	0565000000
QL 4 SAK35N	99	50	0565100000
QL 10 SAK35N	99	20	0565200000
VH 17/8/5 SAK35	50	50	0267000000
BFSC M4X30	50	50	0267100000
SS M4 D 128-A 4	100	100	0136400000
STB 16/D7/4/M4 SAK35	50	50	0140200000
PS 4 F.STB 4	20	20	0299600000
Width [mm]			
AP SAK35/TW SAK16	1.5	10	0303660000
AP SAK35/TW SAK16 BL	1.5	10	0303680000
Width [mm]			
TW SAK35	1.5	20	0304360000
AD 4 SAK35N	50	50	0576700000
BFSC M4X32 PA/RT	100	100	0129100000
DEK 5			

Modular feed-through terminals

TS 35 / PA

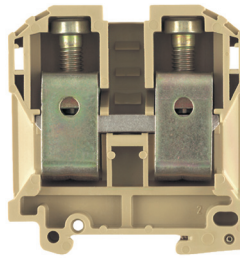
SAK 70/35

70 mm²

TS 35 / PA

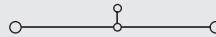
A

When using ATEX certified components in hazardous area applications the installation instructions and the rated data for accessories in the technical appendix must be considered.



Width/Length/Height with TS35x7.5	mm
Max. current / max. cond. cross-section	A/mm ²
Max. clamping range	mm ²

22 x 75 x 87
192 / 70
16 ... 70



Technical data

Rated data	
Rated voltage	V
Rated current	A
Rated cross-section	mm ²
Rated impulse voltage / Pollution severity	kV/-
Plug gauge IEC 60-947-1 / flammability class acc. UL 94	
Approvals	

IEC 60947-7-1

IEC	UL	CSA	EN 50019
1000	600	600	
192	145	150	
70	AWG 4...2/0	AWG 4...2/0	
			8 / 3
B11 / V2			



Clampable conductors (H05V/H07V)	
Solid / stranded	mm ²
Flexible / flexible w. wire end ferrule	mm ²
Tightening torque range (clamping screw)	Nm
Stripping length / blade size	mm / -

Rated connection	Additional connection
16...16 / 16...70	
16...70 / 16...35	
6.0...12 (M 8)	
24 / S6 (DIN 6911)	

2 clampable conductors of equal cross-section	
Solid / stranded	mm ²
Flexible / flexible w. wire end ferrule	mm ²

Information

Tightening torque 12 Nm for 70 mm² stranded wire.


Order data

Version	
	beige
	blue

Information

Type	Qty.	Order No.
SAK 70/35	10	0139160000

Accessories

Cross-connection, screwable	
	2-pole
	3-pole
	4-pole
	10-pole
	Connecting sleeve
	Fixing screw
	Fuse cartridges

Type	Current [A]	Qty.	Order No.
QL 2 SAK70	192	20	0345300000
QL 3 SAK70	192	5	0167000000
<hr/>			
VH 30.5/11/5.5 SAK70		20	0345500000
BFSC M5X45		20	0345600000
SS M5 D 128-A 5		50	0346100000

Cross-connection saddle	
	Cross-connection saddle
	Connecting sleeve
	Fixing screw

Socket / Test plug	
	Socket
	Test plug

STB 16/D7/4/M5 SAK70	50	0385400000
PS 4 F.STB 4	20	0299600000

End plate	
	beige
	blue

Width [mm]			
AP SAK70/35	2	10	0340960000

Partition / Partition disc	
	beige
	blue
	Partition disc

Width [mm]			

Cover / fixing screw (plastic)	
	Cover
	Fixing screw (plastic)

AD 3 SAK70	10	0344300000
BFSC M5X45 PA/NA	50	0344400000

Marking systems

DEK 5

Detailed information on all versions in chapter accessories.

Modular feed-through terminals

TS 35 / KrG

SAK 2.5

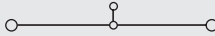
2.5 mm²

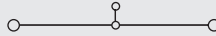
SAK 4

4 mm²

When using ATEX certified components in hazardous area applications the installation instructions and the rated data for accessories in the technical appendix must be considered.


Width/Length/Height with TS35x7.5	mm
Max. current / max. cond. cross-section	A/mm ²
Max. clamping range	mm ²


6.1 x 49.5 x 40	
32 / 6	
0.13 ... 6	

6.5 x 45 x 44	
41 / 6	
0.13 ... 6	

Technical data

Rated data	
Rated voltage	V
Rated current	A
Rated cross-section	mm ²
Rated impulse voltage / Pollution severity	kV/-
Plug gauge IEC 60-947-1 / flammability class acc. UL 94 Approvals	
Clampable conductors (H05V/H07V)	
Solid / stranded	mm ²
Flexible / flexible w. wire end ferrule	mm ²
Tightening torque range (clamping screw)	Nm
Stripping length / blade size	mm / -
2 clampable conductors of equal cross-section	
Solid / stranded	mm ²
Flexible / flexible w. wire end ferrule	mm ²
Information	

IEC 60947-7-1			
IEC	UL	CSA	EN 50019
800	600	600	
24	20	25	
2.5	AWG 22...12	AWG 26...10	
8 / 3			
A3 / 5VA			
			
Rated connection		Additional connection	
0.5...6 / 0.5...4			
0.5...4 / 0.5...2.5			
0.4...0.6 (M 2.5)			
10 / 3.5 x 0.6			
The rated voltage is 630/690 V when using wire end ferrules without end cover or partition plates.			

IEC 60947-7-1			
IEC	UL	CSA	EN 50019
800	600	600	
32	30	36	
4	AWG 22...12	AWG 26...10	
8 / 3			
A4 / 5VA			
			
Rated connection		Additional connection	
0.5...6 / 0.5...4			
0.5...4 / 0.5...4			
0.5...1.0 (M 3)			
12 / 3.5 x 0.6			
1.5...1.5			
0.5...1.5			
To use twin ferrules is the rated voltage 630/690 V.			


Order data

Version	
	yellow
	blue
Information	

Type	Qty.	Order No.
SAK 2.5/35 KRG	100	0380420000
SAK 2.5/35 KRG/BL	100	0380470000

Type	Qty.	Order No.
SAK 4/35 KRG	100	0443620000
SAK 4/35 KRG/BL	100	0443670000

Accessories

Cross-connection, screwable	
	(Q)
	2-pole
	3-pole
	4-pole
	10-pole
	Connecting sleeve
	Fixing screw
	Fuse cartridges
Cross-connection saddle	
	Cross-connection saddle
	Connecting sleeve
	Fixing screw
Socket / Test plug	
	Socket
	Test plug
End plate	
	yellow
	blue
Partition / Partition disc	
	yellow
	blue
	Partition disc
Cover / fixing screw (plastic)	
	Cover
	Fixing screw (plastic)
Marking systems	
Detailed information on all versions in chapter accessories.	

Type	Current [A]	Qty.	Order No.
Q 2 SAK2.5	41	50	0337000000
Q 3 SAK2.5	41	50	0337100000
Q 4 SAK2.5	41	50	0337200000
Q 10 SAK2.5	41	20	0368700000
Width [mm]			
AP SAK2.5 KRG	1.5	20	0279520000
AP SAK2.5 KRG/BL	1.5	20	0279570000
Width [mm]			
TW SAK2.5 KRG	2.5	20	0302820000
TW SAK2.5 KRG/BL	2.5	20	0302870000
TSCH 1	2	100	0319160000
AD 4 AKZ4	50		0303400000
BFSC M3X22 PA/RT	100		0128900000
DEK 6			

Type	Current [A]	Qty.	Order No.
Q 2 SAK4	41	50	0336700000
Q 3 SAK4	41	50	0336800000
Q 4 SAK4	41	50	0336900000
Q 10 SAK4	41	20	0368800000
VL 2 SAK4	50		0197000000
VH 19/5/3.5 SAK4-16	50		0285100000
BFSC M3X25	100		0292500000
STB 14/D5/2.3/M3 SAK2.5	50		0168600000
PS 2.3 RT	20		0180400000
Width [mm]			
AP SAK4-10 KRG	1.5	20	0117920000
AP SAK4-10 KRG/BL	1.5	20	0117970000
Width [mm]			
TW SAK4-10 KRG	2.5	20	0130120000
TW SAK4-10 KRG/BL	2.5	20	0130170000
TSCH 1	2	100	0319160000
AD 4 SAK4	50		0285300000
BFSC M3X22 PA/RT	100		0128900000
DEK 6,5			

Modular feed-through terminals

TS 35 / KrG

SAK 6

6 mm²

SAK 10

10 mm²

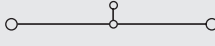
TS 35 / KrG

A

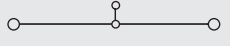
When using ATEX certified components in hazardous area applications the installation instructions and the rated data for accessories in the technical appendix must be considered.

Width/Length/Height with TS35x7.5	mm
Max. current / max. cond. cross-section	A/mm ²
Max. clamping range	mm ²

8 x 45 x 44
57 / 10
0.33 ... 10



10 x 45 x 51.5
76 / 16
1.5 ... 16



Technical data

Rated data	
Rated voltage	V
Rated current	A
Rated cross-section	mm ²
Rated impulse voltage / Pollution severity	kV/-
Plug gauge IEC 60-947-1 / flammability class acc. UL 94 Approvals	

IEC 60947-7-1

IEC	UL	CSA	EN 50019
800	600	600	
41	40	47	
6	AWG 22...8	AWG 20...8	
8 / 3			
A5 / 5VA			

IEC 60947-7-1

IEC	UL	CSA	EN 50019
800	600	600	
57	60	65	
10	AWG 14...6	AWG 14...6	
8 / 3			
B6 / 5VA			

Clampable conductors (H05V/H07V)	
Solid / stranded	mm ²
Flexible / flexible w. wire end ferrule	mm ²
Tightening torque range (clamping screw)	Nm
Stripping length / blade size	mm / -

Rated connection	Additional connection
0.5...10 / 0.5...6	
0.5...10 / 0.5...6	
0.8...1.6 (M 3.5)	
12 / 4.0 x 0.8	

Rated connection	Additional connection
1.5...10 / 1.5...16	
1.5...16 / 1.5...10	
2.0...2.4 (M 4)	
12 / 5.5 x 1.0	

2 clampable conductors of equal cross-section	
Solid / stranded	mm ²
Flexible / flexible w. wire end ferrule	mm ²

To use twin ferrules is the rated voltage 630/690 V.

Tightening torque 2 Nm for 10 and 16 mm² stranded and AWG 6/7 wire.

Information

Order data


Version	
yellow	
blue	

Type	Qty.	Order No.
SAK 6/35 KRG	100	0380520000
SAK 6/35 KRG/BL	100	0380570000

Type	Qty.	Order No.
SAK 10/35 KRG	100	0443720000
SAK 10/35 KRG/BL	100	0443770000

Information

Accessories

Cross-connection, screwable	
	2-pole
	3-pole
	4-pole
	10-pole
	Connecting sleeve
	Fixing screw
	Fuse cartridges

Type	Current [A]	Qty.	Order No.
Q 2 SAK6N	57	50	0456700000
Q 3 SAK6N	57	50	0456800000
Q 4 SAK6N	57	50	0456900000
Q 10 SAK6N	57	20	0457000000

Type	Current [A]	Qty.	Order No.
Q 2 SAK10	57	50	0457100000
Q 3 SAK10	57	50	0457200000
Q 4 SAK10	57	50	0457300000
Q 10 SAK10	57	20	0457400000

Cross-connection saddle	
Cross-connection saddle	VL 2 SAK6N/SAKT
Connecting sleeve	VH 19/5/3.5 SAK4-16
Fixing screw	BFSC M3X25

Type	Current [A]	Qty.	Order No.
VL 2 SAK6/10/SAKB	50	0135900000	
VH 19/5/3.5 SAK4-16	50	0285100000	
BFSC M3X25	100	0292500000	

Socket / Test plug	
Socket	STB 14/D6/4/M3 SAK10
Test plug	PS 4 F.STB 4

Type	Current [A]	Qty.	Order No.
STB 14/D6/4/M3 SAK10	50	0169900000	
PS 4 F.STB 4	20	0299600000	

End plate	
yellow	AP SAK4-10 KRG
blue	AP SAK4-10 KRG/BL

Type	Current [A]	Qty.	Order No.
AP SAK4-10 KRG	1.5	20	0117920000
AP SAK4-10 KRG/BL	1.5	20	0117970000

Partition / Partition disc	
yellow	TW SAK4-10 KRG
blue	TW SAK4-10 KRG/BL
Partition disc	TSCH 1

Type	Current [A]	Qty.	Order No.
TW SAK4-10 KRG	2.5	20	0130120000
TW SAK4-10 KRG/BL	2.5	20	0130170000
TSCH 1	2	100	0319160000

Cover / fixing screw (plastic)	
Cover	AD 4 SAK6N
Fixing screw (plastic)	BFSC M3X22 PA/RT

Type	Current [A]	Qty.	Order No.
AD 4 SAK10	50	0178600000	
BFSC M3X22 PA/RT	100	0128900000	

Marking systems	
	DEK 8

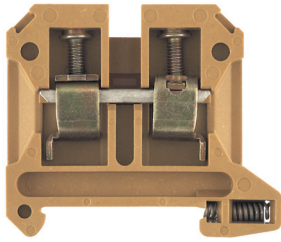
Type	Current [A]	Qty.	Order No.
	DEK 5		

Detailed information on all versions in chapter accessories.

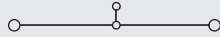
Modular feed-through terminals

SAK 16

16 mm²



12 x 50 x 57.5
76 / 16
2.5 ... 16



IEC 60947-7-1

IEC	UL	CSA	EN 50019
1000	600	600	
76	80	87	
16	AWG 12...6	AWG 10...6	
8 / 3			
B6 / 5VA			



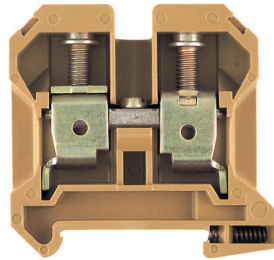
Rated connection	Additional connection
2.5...16 / 4...16	
4...16 / 4...16	
2.0...2.4 (M 4)	
15 / 5.5 x 1.0	

Installation of the QL side by side use a TW/AP.

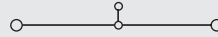
Type	Qty.	Order No.
SAK 16/35 KRG	50	0380620000

SAK 35N/35

35 mm²



16 x 63 x 60
125 / 50
2.5 ... 50



IEC 60947-7-1

IEC	UL	CSA	EN 50019
1000	600	600	
125	105	120	
35	AWG 12...2	AWG 12...2	
8 / 3			
B8 / 5VA			



Rated connection	Additional connection
2.5...16 / 4...50	
2.5...35 / 1.5...35	
4.0...5.0 (M 6)	
18 / 6.5 x 1.2	

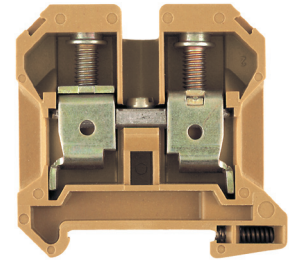
Installation of the QL side by side use a TW/AP.

Type	Qty.	Order No.
SAK 35N/35 KRG	20	0608220000

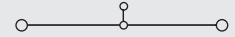
SAK 35N/35/IK

35 mm²

Hexagon socket head screw



16 x 63 x 60
125 / 50
2.5 ... 50



IEC 60947-7-1

IEC	UL	CSA	EN 50019
1000	600	600	
125	105	120	
35	AWG 12...2	AWG 12...2	
8 / 3			
B8 / 5VA			



Rated connection	Additional connection
2.5...16 / 4...50	
2.5...35 / 1.5...35	
4.0...6.0 (M 6)	
18 / S 4 (DIN 6911)	

Installation of the QL side by side use a TW/AP.

Type	Qty.	Order No.
SAK 35N/35/IK KRG	20	0608320000
SAK 35N/35/IK KRG/BL	20	0608370000

Type	Current [A]	Qty.	Order No.
Q 2 SAK16	76	50	0457500000
Q 3 SAK16	76	50	0457600000
Q 4 SAK16	76	50	0457700000
Q 10 SAK16	76	20	0457800000

VL 2 SAK16/SAKA	50	0135800000
VH 19/5/3.5 SAK4-16	50	0285100000
BFSC M3X25	100	0292500000

STB 14/D6/4/M3 SAK10	50	0169900000
PS 4 F.STB 4	20	0299600000

Width [mm]			
AP SAK16 KRG	3	20	0271120000

Width [mm]			
TW SAK16 KRG	3	20	0281120000

TSCH 1	2	100	0319160000
--------	---	-----	------------

AD 4 SAK16	50	0518200000
BFSC M3X22 PA/RT	100	0128900000

DEK 5			
-------	--	--	--

Type	Current [A]	Qty.	Order No.
QL 2 SAK35N	99	50	0564900000
QL 3 SAK35N	99	50	0565000000
QL 4 SAK35N	99	50	0565100000
QL 10 SAK35N	99	20	0565200000
VH 17/8/5 SAK35	50	50	0267000000
BFSC M4X30	50	50	0267100000
SS M4 D 128-A 4	100	100	0136400000

STB 16/D7/4/M4 SAK35	50	0140200000
PS 4 F.STB 4	20	0299600000

Width [mm]			
AP SAK35 KRG	3	10	0303620000
AP SAK35 KRG/BL	3	10	0303670000

Width [mm]			
TW SAK35 KRG	3	20	0304320000

AD 4 SAK35	50	0178700000
BFSC M3X22 PA/RT	100	0128900000

DEK 5			
-------	--	--	--

Type	Current [A]	Qty.	Order No.
QL 2 SAK35N	99	50	0564900000
QL 3 SAK35N	99	50	0565000000
QL 4 SAK35N	99	50	0565100000
QL 10 SAK35N	99	20	0565200000
VH 17/8/5 SAK35	50	50	0267000000
BFSC M4X30	50	50	0267100000
SS M4 D 128-A 4	100	100	0136400000

STB 16/D7/4/M4 SAK35	50	0140200000
PS 4 F.STB 4	20	0299600000

Width [mm]			
AP SAK35 KRG	3	10	0303620000
AP SAK35 KRG/BL	3	10	0303670000

Width [mm]			
TW SAK35 KRG	3	20	0304320000

AD 4 SAK35N	50	0576700000
BFSC M4X32 PA/RT	100	0129100000

DEK 5			
-------	--	--	--

Modular feed-through terminals

TS 35 / KrG

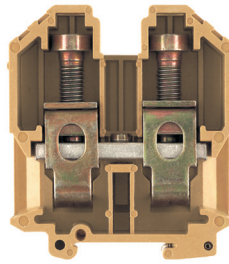
SAK 95/35

95 mm²

TS 35 / KrG

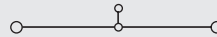
A

When using ATEX certified components in hazardous area applications the installation instructions and the rated data for accessories in the technical appendix must be considered.



Width/Length/Height with TS35x7.5	mm
Max. current / max. cond. cross-section	A/mm ²
Max. clamping range	mm ²

28 x 83.5 x 96.5
269 / 120
16 ... 120



Technical data

Rated data	
Rated voltage	V
Rated current	A
Rated cross-section	mm ²
Rated impulse voltage / Pollution severity	kV/-
Plug gauge IEC 60-947-1 / flammability class acc. UL 94	
Approvals	

IEC 60947-7-1

IEC	UL	CSA	EN 50019
1000	600	600	
232	190	210	
95	AWG 6...3/0	AWG 6...3/0	
		8 / 3	
		B12 / 5VA	



Clampable conductors (H05V/H07V)	
Solid / stranded	mm ²
Flexible / flexible w. wire end ferrule	mm ²
Tightening torque range (clamping screw)	Nm
Stripping length / blade size	mm / -

Rated connection	Additional connection
16...16 / 10...120	
16...95 / 10...35	
16...20 (M 10)	
30 / S8 (DIN 6911)	

2 clampable conductors of equal cross-section	
Solid / stranded	mm ²
Flexible / flexible w. wire end ferrule	mm ²

Information


Order data

Version	
	yellow
	blue

Type	Qty.	Order No.
SAK 95/35 KRG	10	0662220000

Information

Accessories

Cross-connection, screwable	
	2-pole
	3-pole
	4-pole
	10-pole
	Connecting sleeve
	Fixing screw
	Fuse cartridges

Type	Current [A]	Qty.	Order No.
QL 2 SAKG28		10	0551200000
QL 3 SAKG28		5	0407600000
QL 4 SAKG28		5	0407700000
VH 35/11/5.5 SAK95		10	0551100000
KISC M5X50/26 SAK95		20	0630200000
SS M5 D 128-A 5		50	0346100000

Cross-connection saddle	
	Cross-connection saddle
	Connecting sleeve
	Fixing screw

Socket / Test plug	
	Socket
	Test plug

Type	Qty.	Order No.
STB 16/D7/4/M5 SAK70	50	0385400000
PS 4 F.STB 4	20	0299600000

End plate	
	yellow
	blue

Type	Width [mm]	Qty.	Order No.
AP SAK95 KRG	3	10	0550920000
AP SAK95 KRG/BL	3	10	0550970000

Partition / Partition disc	
	yellow
	blue
	Partition disc

Cover / fixing screw (plastic)	
	Cover
	Fixing screw (plastic)

Type	Width [mm]	Qty.	Order No.
ADP 3/HP3 1M		1	0485400000
BFSC M5X45 PA/NA		50	0344400000

Marking systems

DEK 5

Detailed information on all versions in chapter accessories.

Holder HP 3 0485760000 for the ADP 3-Profil.

Spring Loaded Terminal

TS 35 / PA

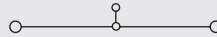
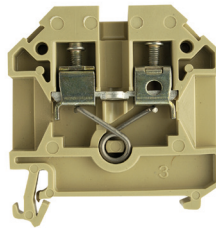
RSF 3/35

4 mm²

When using ATEX certified components in hazardous area applications the installation instructions and the rated data for accessories in the technical appendix must be considered.

Width/Length/Height with TS35x7.5	mm
Max. current / max. cond. cross-section	A/mm ²
Max. clamping range	mm ²

8 x 50 x 60
32 / 4
0.5 ... 4



Technical data

Rated data	
Rated voltage	V
Rated current	A
Rated cross-section	mm ²
Rated impulse voltage / Pollution severity	kV/-
Plug gauge IEC 60-947-1 / flammability class acc. UL 94	
Approvals	

IEC 60947-7-1

IEC	UL	CSA	EN 50019
630	600	600	
32	20	25	
4	AWG 22...12	AWG 22...12	
		6 / 3	
		/ V2	



Clampable conductors (H05V/H07V)	
Solid / stranded	mm ²
Flexible / flexible w. wire end ferrule	mm ²
Tightening torque range (clamping screw)	Nm
Stripping length / blade size	mm / -

Rated connection	Additional connection
0.5...4 / 0.5...4	
0.5...4 / 0.5...4	
0.5...1.0 (M3)	
12 / 3.5 x 0.6	

2 clampable conductors of equal cross-section	
Solid / stranded	mm ²
Flexible / flexible w. wire end ferrule	mm ²

Information


Order data

Version	
	beige
	blue

Type	Qty.	Order No.
RSF 3/35	50	9501160000

Information

Accessories

Cross-connection, screwable	
	2-pole
	3-pole
	4-pole
	10-pole
	Connecting sleeve
	Fixing screw
	Fuse cartridges

Type	Current [A]	Qty.	Order No.
QL 2 SAK6N	57	50	0194300000
QL 3 SAK6N	57	50	0194400000
QL 4 SAK6N	57	50	0194500000
QL 10 SAK6N	57	20	0338300000
VH 13.5/4.9/3.3 SAK4		100	0248500000
KISC M3X20.5/10 EK4		100	0303000000
SS M3 D 128-A 3		50	0164400000

Cross-connection saddle	
	Cross-connection saddle
	Connecting sleeve
	Fixing screw

VL 2 SAK6N/SAKT	50	0194700000
VH 21/5/3.5 SAK16-35	50	0309600000
BFSC M3X30	50	0296200000

Socket / Test plug	
	Socket
	Test plug

STB 14/D5/2.3/M3 SAK2.5	50	0168600000
PS 2.3 RT	20	0180400000

End plate	
	beige
	blue

Width [mm]			
AP RSF3	3	10	0270460000

Partition / Partition disc	
	beige
	blue
	Partition disc

Width [mm]			
TW AST1/PA HP/DBR/0.5	0.5	20	0474700000
TSCH 1	2	100	0319160000

Cover / fixing screw (plastic)	
	Cover
	Fixing screw (plastic)

ADP 2/HP2 1M	36	0485300000
--------------	----	------------

Marking systems

DEK 5		
-------	--	--

Detailed information on all versions in chapter accessories.

Double Deck Terminal

TS 35 / PA

DK 4/35

4 mm²

DK 4 Q/35

4 mm²

TS 35 / PA

A

When using ATEX certified components in hazardous area applications the installation instructions and the rated data for accessories in the technical appendix must be considered.

Width/Length/Height with TS35x7.5	mm
Max. current / max. cond. cross-section	A/mm ²
Max. clamping range	mm ²

6 x 54 x 60.5	
41 / 6	
0.13 ... 6	

6 x 54 x 60.5	
41 / 6	
0.13 ... 6	

Technical data

Rated data	
Rated voltage	V
Rated current	A
Rated cross-section	mm ²
Rated impulse voltage / Pollution severity	kV/-
Plug gauge IEC 60-947-1 / flammability class acc. UL 94	
Approvals	

IEC 60947-7-1

IEC	UL	CSA	EN 50019
500	300	300	
32	27	10	
4	AWG 22...12	AWG 26...12	
		6 / 3	
		A3 / V2	

IEC 60947-7-1

IEC	UL	CSA	EN 50019
500	300	300	
32	27	10	
4	AWG 22...12	AWG 26...12	
		6 / 3	
		A3 / V2	

Clampable conductors (H05V/H07V)	
Solid / stranded	mm ²
Flexible / flexible w. wire end ferrule	mm ²
Tightening torque range (clamping screw)	Nm
Stripping length / blade size	mm / -



Rated connection	Additional connection
0.5...6 / 0.5...4	
0.5...4 / 0.5...2.5	
0.6...0.8 (M3)	
8 / 3.5 x 0.6	



Rated connection	Additional connection
0.5...6 / 0.5...4	
0.5...4 / 0.5...2.5	
0.6...0.8 (M3)	
8 / 3.5 x 0.6	

2 clampable conductors of equal cross-section	
Solid / stranded	mm ²
Flexible / flexible w. wire end ferrule	mm ²

0.5...1.5	
0.5...1.5 / 0.5...1.5	

0.5...1.5	
0.5...1.5 / 0.5...1.5	

Information

Information

Order data

Version	
beige	
blue	

Type	Qty.	Order No.
DK 4/35	100	0527660000
DK 4/35 BL	100	0527680000

Type	Qty.	Order No.
DK 4Q/35	100	0590160000
DK 4Q/35 BL	100	0590180000

Information

Information

Accessories

Cross-connection, screwable	
2-pole	
3-pole	
4-pole	
10-pole	
Connecting sleeve	
Fixing screw	
Fuse cartridges	

Type	Current [A]	Qty.	Order No.
Q 2 AKZ4	32	50	0336400000
Q 3 AKZ4	32	50	0336500000
Q 4 AKZ4	32	50	0336600000
Q 10 AKZ4	32	20	0368600000

Type	Current [A]	Qty.	Order No.
Q 2 AKZ4	32	50	0336400000
Q 3 AKZ4	32	50	0336500000
Q 4 AKZ4	32	50	0336600000
Q 10 AKZ4	32	20	0368600000

Cross-connection saddle	
Cross-connection saddle	
Connecting sleeve	
Fixing screw	

Cross-connection saddle	
Cross-connection saddle	
Connecting sleeve	
Fixing screw	

Socket / Test plug	
Socket	
Test plug	

Type	Qty.	Order No.
STB 8.5/D4/2.3/M2.5 AKZ	50	0215700000
PS 2.3 RT	20	0180400000

Type	Qty.	Order No.
STB 8.5/D4/2.3/M2.5 AKZ	50	0215700000
PS 2.3 RT	20	0180400000

End plate	
beige	
blue	

Type	Width [mm]	Qty.	Order No.
AP DK4	1.5	20	0359260000
AP DK4 BL	1.5	20	0359280000

Type	Width [mm]	Qty.	Order No.
AP DK4Q	1.5	20	1397160000
AP DK4Q BL	1.5	20	1397180000

Partition / Partition disc	
beige	
blue	
Partition disc	

Type	Width [mm]	Qty.	Order No.
WTW EN	3	20	1058800000
TSCH 6 DK1 S4		5	0190260000

Type	Width [mm]	Qty.	Order No.
WTW EN	3	20	1058800000
TSCH 6 DK1 S4		5	0190260000

Cover / fixing screw (plastic)	
Cover	
Fixing screw (plastic)	

Type	Qty.	Order No.
AD 3 SAK2.5	50	0297900000
BFSC M2.5X18 PA/RT	100	0303300000

Type	Qty.	Order No.
AD 3 SAK2.5	50	0297900000
BFSC M2.5X18 PA/RT	100	0303300000

Marking systems	
DEK 6	

DEK 6	
-------	--

DEK 6	
-------	--

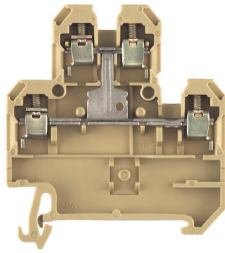
Detailed information on all versions in chapter accessories.

Detailed information on all versions in chapter accessories.

Double Deck Terminal

DK 4 QV/35

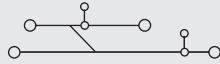
4 mm²



6 x 54 x 40.5

41 / 6

0.13 ... 6



IEC 60947-7-1

IEC	UL	CSA	EN 50019
500	300	300	
32	27	10	
4	AWG 22...12	AWG 26...12	
	6 / 3		
	A3 / V2		



Rated connection	Additional connection
0.5...6 / 0.5...4	
0.5...4 / 0.5...2.5	
0.6...0.8 (M 3)	
8 / 3.5 x 0.6	

0.5...1.5

0.5...1.5 / 0.5...1.5

Type	Qty.	Order No.
DK 4QV/35	100	0363660000
DK 4QV/35 BL	100	0363680000

Type	Current [A]	Qty.	Order No.
Q 2 AKZ4	32	50	0336400000
Q 3 AKZ4	32	50	0336500000
Q 4 AKZ4	32	50	0336600000
Q 10 AKZ4	32	20	0368600000

STB 8.5/D4/2.3/M2.5 AKZ	50	0215700000
PS 2.3 RT	20	0180400000

Width [mm]

AP DK4Q	1.5	20	1397160000
AP DK4Q BL	1.5	20	1397180000

Width [mm]

WTW EN	3	20	1058800000
--------	---	----	------------

TSCH 6 DKI S4	5	100	0190260000
---------------	---	-----	------------

AD 4 AKZ4	50	0303400000
-----------	----	------------

BFSC M2.5X18 PA/RT	100	0303300000
--------------------	-----	------------

DEK 6

Modular PE terminals

TS 35 / PA

EK 2.5/35

2.5 mm²

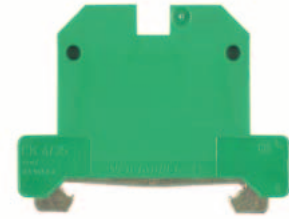
EK 4/35

4 mm²

TS 35 / PA

A

When using ATEX certified components in hazardous area applications the installation instructions and the rated data for accessories in the technical appendix must be considered.



Width/Length/Height with TS35x7.5 mm
 Max. current / max. cond. cross-section A/mm²
 Max. clamping range mm²

6 x 56.6 x 40
/ 6
0.33 ... 6

6.5 x 56.5 x 44
/ 6
0.33 ... 6

Technical data

Rated data	
Rated cross-section	mm ²
Rated voltage for adjacent terminal	V
Rated impulse voltage / Pollution severity	kV
Short-duration withstand current	A
Pollution severity	
Plug gauge IEC 60-947-1 / flammability class acc. UL 94 Approvals	

IEC 60947-7-2

IEC	UL	CSA	EN 50019
2.5	AWG 22... 12	AWG 26... 10	
800			
8			
	480 A (4 mm ²)		
	3		
	A3 / V2		

IEC 60947-7-2

IEC	UL	CSA	EN 50019
4	AWG 22... 12	AWG 26... 10	
800			
8			
	720 A (6 mm ²)		
	3		
	A4 / V2		

Clampable conductors (H05V/H07V)	
Solid / stranded	mm ²
Flexible / flexible w. wire end ferrule	mm ²
Tightening torque range (clamping screw)	Nm
Tightening torque range (fixing screw)	Nm
Stripping length / blade size	mm / -

Rated connection	Additional connection
0.5...6 / 0.5...4	
0.5...4 / 0.5...2.5	
0.4...0.6 (M 2.5)	
0.4...0.6 (M 2.5)	
10 / 3.5 x 0.6	

Rated connection	Additional connection
0.5...6 / 0.5...4	
0.5...4 / 0.5...4	
0.5...1.0 (M 3)	
0.5...1.0 (M 3)	
12 / 3.5 x 0.6	

2 clampable conductors of equal cross-section	
Solid / stranded	mm ²
Flexible / flexible w. wire end ferrule	mm ²

Information

Order data

Version
green/yellow

Type	Qty.	Order No.
EK 2.5/35	100	0661060000

Type	Qty.	Order No.
EK 4/35	100	0661160000

Information

Accessories

--

Rail support

Type	Qty.	Order No.
SH 2	10	0494920000

Type	Qty.	Order No.
SH 2	10	0494920000

Marking systems
DEK 6

Marking systems
DEK 6,5

For detailed information on other accessories and applications see "Accessories"

Modular PE terminals

EK 6/35

6 mm²

EK 10

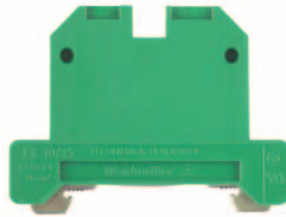
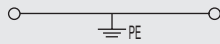
10 mm²

EK 16

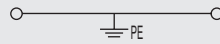
16 mm²



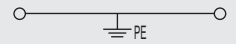
8 x 56.5 x 44
/ 10
0.5 ... 10



10 x 56 x 44
/ 10
0.5 ... 10



12 x 56 x 50
/ 16
1.5 ... 16



IEC 60947-7-2

IEC	UL	CSA	EN 50019
6	AWG 22... 8	AWG 20... 8	
800			
8			
	720 A (6 mm ²)		
	3		
	A5 / V2		



Rated connection	Additional connection
0.5...10 / 1.5...6	
0.5...10 / 0.5...6	
0.8...1.6 (M 3.5)	
0.5...1.0 (M 3)	
12 / 4.0 x 0.8	

IEC 60947-7-2

IEC	UL	CSA	EN 50019
10	AWG 14... 6	AWG 14... 6	
800			
8			
	1200 A (10 mm ²)		
	3		
	B6 / V2		



Rated connection	Additional connection
0.5...10 / 1.5...6	
0.5...10 / 0.5...10	
1.2...2.4 (M 4)	
0.5...1.0 (M 3)	
12 / 5.5 x 1.0	

IEC 60947-7-2

IEC	UL	CSA	EN 50019
16	AWG 12... 4	AWG 10... 4	
800			
8			
	1920 A (16 mm ²)		
	3		
	B6 / V2		



Rated connection	Additional connection
2.5...16 / 2.5...16	
2.5...16 / 4...16	
2.0...2.4 (M 4)	
0.5...1.0 (M 3)	
16 / 5.5 x 1.0	

Type	Qty.	Order No.
EK 6/35	100	0661260000

Type	Qty.	Order No.
EK 10/35	100	0661360000

Type	Qty.	Order No.
EK 16/35	50	0190160000

Type	Qty.	Order No.
SH 2	10	0494920000

Type	Qty.	Order No.
SH 2	10	0494920000

Type	Qty.	Order No.
SH 2	10	0494920000

DEK 8

DEK 5

DEK 5

Modular PE terminals

TS 35 / PA

EK 35/35

35 mm²

EK 95/35

95 mm²

TS 35 / PA

A

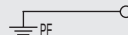
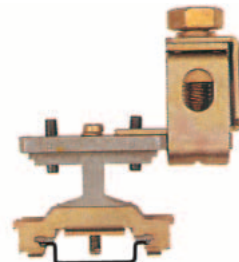
When using ATEX certified components in hazardous area applications the installation instructions and the rated data for accessories in the technical appendix must be considered.

Width/Length/Height with TS35x7.5	mm
Max. current / max. cond. cross-section	A/mm ²
Max. clamping range	mm ²

16 x 58 x 60
/ 50
2.5 ... 50



25 x 76.5 x 90.5
/ 120
10 ... 120

Technical data

Rated data	
Rated cross-section	mm ²
Rated voltage for adjacent terminal	V
Rated impulse voltage / Pollution severity	kV
Short-duration withstand current	A
Pollution severity	
Plug gauge IEC 60-947-1 / flammability class acc. UL 94	
Approvals	

IEC 60947-7-2

IEC	UL	CSA	EN 50019
35	AWG 6... 2	AWG 12... 2	
800			
8			
	4200 A (35 mm ²)		
	3		
	B9 / V2		

IEC 60947-7-2

IEC	UL	CSA	EN 50019
95			
8			
	11400 A (95 mm ²)		
	3		
	B12		

Clampable conductors (H05V/H07V)	
Solid / stranded	mm ²
Flexible / flexible w. wire end ferrule	mm ²
Tightening torque range (clamping screw)	Nm
Tightening torque range (fixing screw)	Nm
Stripping length / blade size	mm / -

Rated connection	Additional connection
6...16 / 16...50	
10...35 / 10...35	
4.0...6.0 (M 6)	
1.2...2.4 (M 4)	
20 / 6.5 x 1.2	

Rated connection	Additional connection
10...16 / 10...95	
16...95 / 10...95	
10...20 (M 10)	
1.2...2.4 (M 4)	
27	

2 clampable conductors of equal cross-section	
Solid / stranded	mm ²
Flexible / flexible w. wire end ferrule	mm ²

Information

A TS 35x15/2.3 must be used for connecting conductors of 35-50 mm ² .
--

The copper rail TS 35, order No. 0270100000, must be used for fixing.

Order data

Version
green/yellow

Type	Qty.	Order No.
EK 35/35	20	0661460000

Type	Qty.	Order No.
EK 95/35/1ZB BK	10	0535300000

Information

--

--

Accessories

--

--

--

Rail support

Type	Qty.	Order No.
SH 2	10	0494920000

Type	Qty.	Order No.
SH 2	10	0494920000

Marking systems

DEK 5

--

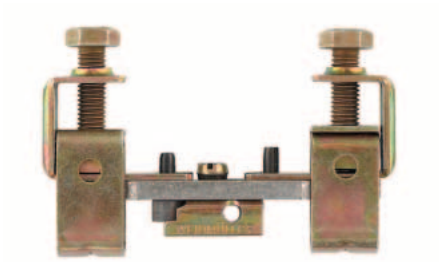
For detailed information on other accessories and applications see "Accessories"

To fix the terminals use the copper rail TS35 order no. 0270100000.

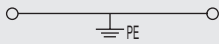
Modular PE terminals

SAKE 70/35

70 mm²



18 x 94 x 59.5
/ 70
10 ... 70



IEC 60947-7-2

IEC	UL	CSA	EN 50019
70			

B10



Rated connection	Additional connection
10...16 / 10...70	
...70 / 10...10	
6.0...12 (M 8)	
2.0...4.0 (M 5)	
25	

A steel TS 35x15/2.3 must be used when connecting conductors of 35-50 mm², and a copper rail for conductors of 70 mm².

Type	Qty.	Order No.
EK 70/35/M.2ZB O.IK	10	1338300000

Type	Qty.	Order No.
SH 2	10	0494920000

For wires with 35 - 50 mm² use the TS 35x15/2.3 in steel and with 70 mm² wires use the TS 35/15/2.3 Cu.

Disconnect terminals

TS 35 / PA

SAKR

4 mm²

SAKR-D

4 mm²

TS 35 / PA

A

When using ATEX certified components in hazardous area applications the installation instructions and the rated data for accessories in the technical appendix must be considered.

Width/Length/Height with TS35x7.5	mm
Max. current / max. cond. cross-section	A/mm ²
Max. clamping range	mm ²

6.5 x 42 x 40.5	
10 / 4	
0.13 ... 4	

6.5 x 46 x 38	
10 / 4	
0.13 ... 4	

Technical data

Rated data	
Rated voltage	V
Rated current	A
Rated cross-section	mm ²
Rated impulse voltage / Pollution severity	kV/-
Plug gauge IEC 60-947-1 / flammability class acc. UL 94	
Approvals	

IEC 60947-7-1 / VDE 0100-537

IEC	UL	CSA	EN 50019
400	300	300	
10	10	10	
4	AWG 26...12	AWG 26...12	
		6 / 3	
		A3 / V2	

IEC 60947-7-1 / VDE 0100-537

IEC	UL	CSA	EN 50019
250	300	300	
10	10	10	
4	AWG 26...12	AWG 22...12	
		6 / 3	
		A3 / V2	

Clampable conductors (H05V/H07V)	
Solid / stranded	mm ²
Flexible / flexible w. wire end ferrule	mm ²
Tightening torque range (clamping screw)	Nm
Stripping length / blade size	mm / -

Rated connection	Additional connection
0.5...4 / 1.5...4	
0.5...4 / 0.5...2.5	
0.5...1.0 (M 3)	
8 / 3.5 x 0.6	

Rated connection	Additional connection
0.5...4 / 1.5...4	
0.5...4 / 0.5...2.5	
0.5...1.0 (M 3)	
8 / 3.5 x 0.6	

2 clampable conductors of equal cross-section	
Solid / stranded	mm ²
Flexible / flexible w. wire end ferrule	mm ²

Information	
The tightening torque is 0.5-0.7 Nm for disconnect terminals with sockets.	

Information	
The tightening torque with test sockets is 0.5-0.7 Nm.	

Order data

Version	
	beige
	blue

Type	Qty.	Order No.
SAKR/35	100	0172160000
SAKR/35 BL	100	0172180000

Type	Qty.	Order No.
SAKRD/35	50	0185760000

SAKR/35 2 StB order No. 0183360000

Accessories

Cross-connection, screwable	
	2-pole
	3-pole
	4-pole
	10-pole
	Connecting sleeve
	Fixing screw
	Fuse cartridges

Type	Current [A]	Qty.	Order No.
QB 2 WI RA6 IS	27	50	0482700000
QB 3 WI RA6 IS	27	50	0482800000
QB 4 WI RA6 IS	27	50	0482900000

Type	Current [A]	Qty.	Order No.
QB 2 WI RA6 IS	27	50	0482700000
QB 3 WI RA6 IS	27	50	0482800000
QB 4 WI RA6 IS	27	50	0482900000

Cross-connection saddle	
	Cross-connection saddle
	Connecting sleeve
	Fixing screw

Socket / Test plug	
	Socket
	Test plug

End plate	
	beige
	blue

Partition / Partition disc	
	beige
	blue
	Partition disc

Cover / fixing screw (plastic)	
	Cover
	Fixing screw (plastic)

Marking systems	
	DEK 6,5

End plate	
	beige
	blue

Cover / fixing screw (plastic)	
	Cover
	Fixing screw (plastic)

Marking systems	
	DEK 6,5

Cover / fixing screw (plastic)	
	Cover
	Fixing screw (plastic)

Marking systems	
	DEK 6,5

Marking systems	
	DEK 6,5

Marking systems	
	DEK 6,5

Marking systems	
	DEK 6,5

Marking systems	
	DEK 6,5

Detailed information on all versions in chapter accessories.

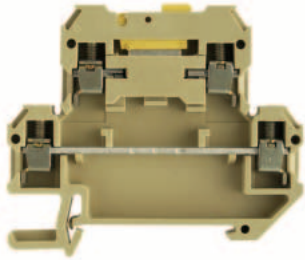
QB 25 blank, see chapter accessories. To use twin ferrules ZH 0,5 to ZH 1,5 is possible.

twin ferrule ZH 0,5 to ZH 1,5 useable.

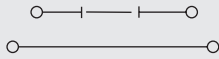
Disconnect terminals

DKT 4

4 mm²



6 x 65 x 56.5
10 / 4
0.13 ... 4



IEC 60947-7-1 / VDE 0100-537

IEC	UL	CSA	EN 50019
400	300	300	
10	10	10	
4	AWG 22...12	AWG 26...12	
	6 / 3		
	A3 / V2		



Rated connection	Additional connection
0.5...4 / 1.5...4	
0.5...4 / 0.5...2.5	
0.5...1.0 (M 3)	
9 / 3.5 x 0.6	

The tightening torque with sockets is 0.5-0.7 Nm.

Type	Qty.	Order No.
DKT 4/35	100	0687460000

DKT 4/35 2 StB Order No. 0327960000

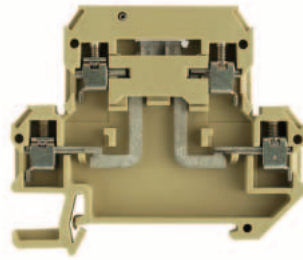
Type	Current [A]	Qty.	Order No.
QB 2 WI RA6 IS	27	50	0482700000
QB 3 WI RA6 IS	27	50	0482800000
QB 4 WI RA6 IS	27	50	0482900000

PS 2.3 RT	20	0180400000
Width [mm]		
AP DKT4 PA	1.5	0687560000
Width [mm]		

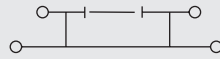
DEK 6

DKT 4 V

4 mm²



6 x 65 x 56.5
10 / 4
0.13 ... 4



IEC 60947-7-1 / VDE 0100-537

IEC	UL	CSA	EN 50019
400			
10			
4			
	6 / 3		
	A3 / V2		

Rated connection	Additional connection
0.5...4 / 1.5...4	
0.5...4 / 0.5...2.5	
0.5...1.0 (M 3)	
9 / 3.5 x 0.6	

The tightening torque with sockets is 0.5-0.7 Nm.

Type	Qty.	Order No.
DKT 4V/35 2STB	100	1304960000

Type	Current [A]	Qty.	Order No.
QB 2 WI RA6 IS	27	50	0482700000
QB 3 WI RA6 IS	27	50	0482800000
QB 4 WI RA6 IS	27	50	0482900000

PS 2.3 RT	20	0180400000
Width [mm]		
AP DKT4 PA	1.5	0687560000
Width [mm]		

DEK 6

Disconnect terminals

TS 35 / KrG

SAKC 4/35

4 mm²

SAKC 10/35

10 mm²

TS 35 / KrG

A

When using ATEX certified components in hazardous area applications the installation instructions and the rated data for accessories in the technical appendix must be considered.

Width/Length/Height with TS35x7.5	mm
Max. current / max. cond. cross-section	A/mm ²
Max. clamping range	mm ²

6.5 x 49.5 x 59.5	
25 / 6	
0.33 ... 6	

12 x 65 x 48.5	
27 / 10	
0.5 ... 10	

Technical data

Rated data	
Rated voltage	V
Rated current	A
Rated cross-section	mm ²
Rated impulse voltage / Pollution severity	kV/-
Plug gauge IEC 60-947-1 / flammability class acc. UL 94	
Approvals	

IEC 60947-7-1

IEC	UL	CSA	EN 50019
400	300	300	
25	25	25	
4	AWG 22...12	AWG 22...10	
6 / 3			
A4 / 5VA			

IEC 60947-7-1

IEC	UL	CSA	EN 50019
500	300	600	
27	25	25	
10	AWG 22...8	AWG 20...10	
6 / 3			
B6 / 5VA			

Clampable conductors (H05V/H07V)	
Solid / stranded	mm ²
Flexible / flexible w. wire end ferrule	mm ²
Tightening torque range (clamping screw)	Nm
Stripping length / blade size	mm / -

Rated connection		Additional connection	
0.5...6 / 1.5...4			
0.5...4 / 0.5...4			
0.5...1.0 (M3)			
12 / 3.5 x 0.6			

Rated connection		Additional connection	
0.5...10 / 1.5...10			
0.5...10 / 0.5...10			
1.2...2.4 (M4)			
12 / 5.5 x 1.0			

2 clampable conductors of equal cross-section	
Solid / stranded	mm ²
Flexible / flexible w. wire end ferrule	mm ²

Information

Information
Tightening torque for the test sockets 0.5 ... 0.7 Nm

Information
Tightening torque for the test sockets 1.2 Nm. Tightening torque for 10 mm ² stranded with 1.6 Nm.

Order data

Version	
	yellow
	blue

Type	Qty.	Order No.
SAKC 4/35	100	0357520000
SAKC 4/35 BL	100	0357570000

Type	Qty.	Order No.
SAKC 10/35 1STB4 KRG	50	1404520000

Information
SAKC 4/35 2 StB Order No. 0340620000

Information
SAKC 10/35 2 StB4 Order No. 1404620000

Accessories

Cross-connection, screwable	
	2-pole
	3-pole
	4-pole
	10-pole
	Connecting sleeve
	Fixing screw
	Fuse cartridges

Type	Current [A]	Qty.	Order No.
QB 2 WI RA6 IS	27	50	0482700000
QB 3 WI RA6 IS	27	50	0482800000
QB 4 WI RA6 IS	27	50	0482900000

Type	Current [A]	Qty.	Order No.
QL 2 SAKA10	36	50	0135500000
QL 3 SAKA10	36	50	0135600000
QL 4 SAKA10	36	50	0135700000
QL 10 SAKA10	36	20	0338500000
VH 13.6/7/4.2 SAKA10		50	0299700000
BFSC M4X20		100	0362800000
SS M4 D 128-A 4		100	0136400000

Cross-connection saddle	
	Cross-connection saddle
	Connecting sleeve
	Fixing screw

Type	Current [A]	Qty.	Order No.

Type	Current [A]	Qty.	Order No.
VH 13.6/7/4.2 SAKA10		50	0299700000

Socket / Test plug	
	Socket
	Test plug

Type	Current [A]	Qty.	Order No.
PS 2.3 RT		20	0180400000

Type	Current [A]	Qty.	Order No.
STB 17/D6/4/M4 SAKC10		50	0147100000
PS 4 F.STB 4		20	0299600000

End plate	
	yellow
	blue

Type	Current [A]	Qty.	Order No.
AP SAK4-10 KRG	1.5	20	0117920000
AP SAK4-10 KRG/BL	1.5	20	0117970000

Type	Current [A]	Qty.	Order No.
AP SAKB/C/T KRG	3	20	0146720000

Partition / Partition disc	
	yellow
	blue
	Partition disc

Type	Current [A]	Qty.	Order No.
TW SAK4-10 KRG	2.5	20	0130120000
TW SAK4-10 KRG/BL	2.5	20	0130170000

Type	Current [A]	Qty.	Order No.
TW SAKB-C-T	3	20	0242920000

Cover / fixing screw (plastic)	
	Cover
	Fixing screw (plastic)

Type	Current [A]	Qty.	Order No.

Type	Current [A]	Qty.	Order No.

Marking systems	
	DEK 6,5

Type	Current [A]	Qty.	Order No.
DEK 6,5			

Type	Current [A]	Qty.	Order No.
DEK 6,5			

Detailed information on all versions in chapter accessories.	
	Dummy plug and pull out tool see chapter accessories

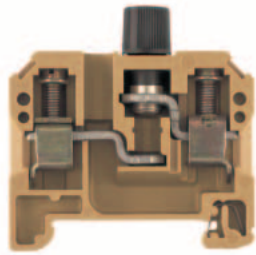
Type	Current [A]	Qty.	Order No.

Type	Current [A]	Qty.	Order No.

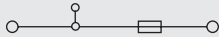
Fuse terminals

SAKS 1/35 5x25

10 mm²



13 x 54 x 61
10 / 16
0.13 ... 16



IEC	UL	CSA	EN 50019
500	300	600	
10	6.3	10	
10	AWG 22... 10	AWG 26... 10	
	6 / 3		
	B6 / 5VA		



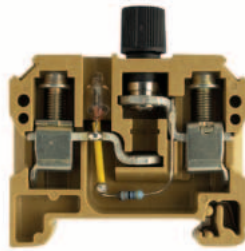
Rated connection

0.5...16 / 1.5...10
0.5...10 / 0.5...10
1.2...2.4 (M 4)
12 / 5.5 x 1.0

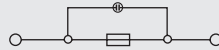
SAKS 1/35 5x25

10 mm²

With Neon Bulb



13 x 54 x 61
6.3 / 16
0.5 ... 16



IEC	UL	CSA	EN 50019
6.3			
10			
	4		
	B6 / 5VA		

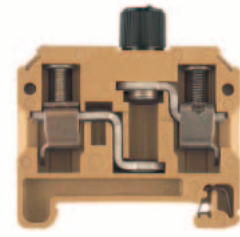


Rated connection

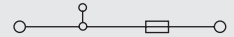
0.5...16 / 1.5...10
0.5...10 / 0.5...10
1.2...2.4 (M 4)
12 / 5.5 x 1.0

SAKS 3/35

10 mm²



13 x 54 x 61
10 / 16
0.33 ... 16



IEC	UL	CSA	EN 50019
500	300	600	
10	10	10	
10	AWG 22... 10	AWG 22... 10	
	6 / 3		
	B6 / 5VA		



Rated connection

0.5...16 / 1.5...10
0.5...10 / 0.5...10
1.2...2.4 (M 4)
12 / 5.5 x 1.0

Type	Qty.	Order No.
SAKS 1/35/G25	20	0501520000

Type	Qty.	Order No.
SAKS 1/35 G25 GL 230VAC	10	0198620000

Type	Qty.	Order No.
SAKS 3/35 G/5X30 500V	20	0328920000

SAKS 3/35 GZ/6.3X32	20	0667520000
SAKS 3 1"x1/4" with a red cap available under 0667420000.		

Type	Current [A]	Qty.	Order No.
QL 2 SAKS1	47	50	0191400000
QL 3 SAKS1	36	50	0191500000
QL 4 SAKS1	36	20	0191600000
QL 10 SAKS1	36	20	0338800000
Width [mm]			
AP SAKS1+3 KRG	3	20	0191320000

Type	Current [A]	Qty.	Order No.
Width [mm]			
AP SAKS1+3 KRG	3	20	0191320000

Type	Current [A]	Qty.	Order No.
Width [mm]			
AP SAKS1+3 KRG	3	20	0191320000

DEK 5

Use the cross connection with a screw M3 x 6 mm with order no. 0346200000.

DEK 5

DEK 5

Fuse terminals

TS 35 / KrG

SAKS 2/35

10 mm²

SAKS 4/35

10 mm²

D 01-fuses

When using ATEX certified components in hazardous area applications the installation instructions and the rated data for accessories in the technical appendix must be considered.

Width/Length/Height with TS35x7.5	mm
Max. current / max. cond. cross-section	A/mm ²
Max. clamping range	mm ²

27.6 x 80 x 75
10 / 16
0.33 ... 16

24 x 75 x 66
16 / 16
0.33 ... 16

Technical data

Rated data	
Rated voltage for adjacent terminal	V
Rated current	A
Rated cross-section	mm ²
Rated impulse voltage / Pollution severity	kV/-
Plug gauge IEC 60-947-1 / flammability class acc. UL 94	
Approvals	
Clamped conductor (H05V/H07V)	
Solid / stranded	mm ²
Flexible / flexible w. wire end ferrule	mm ²
Tightening torque range (clamping screw)	Nm
Stripping length / blade size	mm / -
2 clampable conductors of equal cross-section	
Solid / stranded	mm ²
Flexible / flexible w. wire end ferrule	mm ²
Information	

IEC 60947-7-3 / VDE 0611-6

IEC	UL	CSA	EN 50019
500		600	
10		25	
10		AWG 22... 8	
		6 / 3	
		B6 / 5VA	

SR PC KEH

Rated connection	Additional connection
0.5...16 / 0.5...10	
0.5...10 / 0.5...10	
1.2...2.4 (M 4)	
12 / 5.5 x 1.0	

For short-circuit use up to 25A.

IEC 60947-7-3 / VDE 0611-6

IEC	UL	CSA	EN 50019
400	600	600	
16	30	30	
10	AWG 22... 8	AWG 22... 8	
	6 / 3		
	B6 / 5VA		

UL CE KEH

Rated connection
0.5...16 / 1.5...10
0.5...10 / 0.5...10
1.2...2.4 (M 4)
14 / 5.5 x 1.0

Tightening torque 1.6 Nm for 10 mm² stranded wire.


Order data

Version	
without LED	
Information	

Type	Qty.	Order No.
SAKS 2/35	20	1368720000
Information		

Type	Qty.	Order No.
SAKS 4/35	20	0501820000
Information		

Accessories

Cross-connection	
	2-pole
	3-pole
	4-pole
	10-pole
	Fuse cartridges
	Fixing screw
Screw cap	
	SK
	SK
Gauge pieces	
Fuse cartridges	
Rated voltage 500V	
Fuse cartridges	
Rated voltage 400V	
Marking systems	
For detailed information on other accessories and applications see "Accessories"	

Type	Current [A]	Qty.	Order No.
QL 2 SAKS2	47	20	0207800000
QL 3 SAKS2	36	20	0207900000
QL 4 SAKS2	36	20	0208000000
QL 10 SAKS2	36	20	0338900000
SS M4 D 128-A 4		100	0136400000
BFSC M4X9T		100	0103300000
Colour			
SK E16/SAKS2	black	25	0284110000
Colour			
P 16/16 GR SAKS2	grey	100	0209000000
P 16/20 BL SAKS2	blue	100	0209100000
E 16/10A RT TNDZ		25	0208500000
E 16/16A GR TNDZ		25	0208600000
E 16/20A BL TNDZ		25	0208700000
E 16/25A GE TNDZ		25	0208800000
DEK 5			

Type	Current [A]	Qty.	Order No.
QL 2 SAKS4	47	20	0328000000
QL 3 SAKS4	36	20	0328100000
QL 4 SAKS4	36	20	0328200000
QL 10 SAKS4	36	20	0339000000
SS M4 D 128-A 4		100	0136400000
BFSC M4X9T		100	0103300000
Colour			
SK E14 SAKS4	black	20	0339410000
Colour			
P 14/2 D01 RS SAKS4	pink	50	0138000000
P 14/4 D01 BR SAKS4	brown	50	0138100000
P 14/10 D01 RT SAKS4	red	50	0328700000
P 14/6 D01 GN SAKS4	green	50	0328600000
E 14/10A RT		10	0328400000
E 14/16A GR		10	0328500000
E 14/4A RS		10	0137400000
E 14/4A BR		10	0137500000
DEK 5			

Fuse terminals

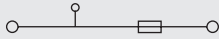
SAKS 4/35 USA

10 mm²

1 1/4 x 1/4



24 x 75 x 73
30 / 16
0.5 ... 16



IEC	UL	CSA	EN 50019
400	600	600	
30	30	30	
10	AWG 20... 8	AWG 22... 8	
	6 / 3		
	B6 / 5VA		



Rated connection

0.5...16 / 1.5...10
0.5...10 / 0.5...10
1.2...2.4 (M 4)
14 / 5.5 x 1.0

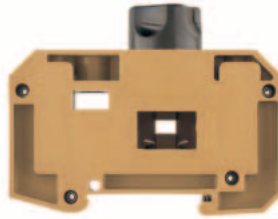
Tightening torque 1.6 Nm for 10 mm² stranded wire.

Type	Qty.	Order No.
SAKS 4/35 USA	20	0178220000

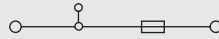
SAKS 5/35

16 mm²

D 02 - fuse



28 x 80 x 66
63 / 16
1.5 ... 16



IEC 60947-7-3 / VDE 0611-6

IEC	UL	CSA	EN 50019
400	600	600	
63	40	63	
16	AWG 14... 6	AWG 14... 6	
	6 / 3		
	B7 / 5VA		



Rated connection

1.5...16 / 1.5...16
1.5...16 / 1.5...16
1.2...2.4 (M 4)
13 / 5.5 x 1.0

Tightening torque 1.6 Nm for 10 mm² stranded wire.

Type	Qty.	Order No.
SAKS 5/35	20	0502120000

Type	Current [A]	Qty.	Order No.
QL 2 SAKS4	47	20	0328000000
QL 3 SAKS4	36	20	0328100000
QL 4 SAKS4	36	20	0328200000
QL 10 SAKS4	36	20	0339000000
SS M4 D 128-A 4		100	0136400000
BFSC M4X9T		100	0103300000
Colour			
SK E14 SAKS4 USA	black	1	2012790000

Colour

DEK 5

Type	Current [A]	Qty.	Order No.
QL 2 SAKS2	47	20	0207800000
QL 3 SAKS2	36	20	0207900000
QL 4 SAKS2	36	20	0208000000
QL 10 SAKS2	36	20	0338900000
SS M4 D 128-A 4		100	0136400000
BFSC M4X9T		100	0103300000
Colour			
SK E18 SAKS5	black	20	0359310000

Colour

P 18/20 D02 BL SAKS5	blue	50	0361800000
P 18/25 D02 GE SAKS5	yellow	50	0361900000
P 18/35 D02 SW SAKS5	black	50	0362000000
P 18/50 D02 WS SAKS5	white	50	0362100000

E 18/20A BL	10	0361300000
E 18/25A GE	10	0361400000
E 18/50A WS	10	0361600000
E 18/63A KU	10	0361700000

DEK 5

Partition plate TW HP (2.0) order No. 0607000000, for TS 32 only

Fuse inserts and gauge rings for Weidmüller fuse terminals

Fuse inserts

Technical data

for terminal type

SAKS 1
SAKS 7
ASK 1
WSI 6



G fuse inserts 5 x 20 without indicator acc. to IEC 60127-2 (VDE 0820 T.2 BI 1)

Size (mm)	Rated voltage (V)	Rated current (A)	Type
5 x 20 Breaking capacity 1500 A (at 250 V, 50 Hz, cos φ 0,7)	250	0.1	(F) G 20/0.10A/F
		0.2	(F) G 20/0.20A/F
		0.25	(F) G 20/0.25A/F
		0.5	(F) G 20/0.50A/F
		0.63	(F) G 20/0.63A/F
		1.0	(F) G 20/1.00A/F
		1.6	(F) G 20/1.60A/F
		2.0	(F) G 20/2.00A/F
		2.5	(F) G 20/2.50A/F
		3.15	(F) G 20/3.15A/F
		4.0	(F) G 20/4.00A/F
		5.0	(F) G 20/5.00A/F
		6.3	(F) G 20/6.30A/F

(M) = medium-delayed action (F) = fast

Order data

Qty.	Order No.
10	0430300000
10	0430400000
10	0430500000
10	0430600000
10	0439000000
10	0430700000
10	0430800000
10	0430900000
10	0431000000
10	0431100000
10	0431200000
10	0431300000
10	0431400000

SAKS 1
SAKS 7
WSI 6



G fuse inserts 5 x 25 with indicator acc. to DIN 41576¹⁾

Size (mm)	Rated voltage (V)	Rated current (A)	Type
5 x 25 m. K.1) Breaking capacity 80 A (at 250 V, 50 Hz, cos φ = 1)	250	0.25	(M) G 25/0.25A/M
		0.5	(M) G 25/0.50A/M
		0.8	(M) G 25/0.80A/M
		1	(M) G 25/1.00A/M
		10	(M) ²⁾ G 25/10.0A/M
		2	(F) G 25/2.00A/F
		4	(F) G 25/4.00A/F
		6.3	(F) G 25/6.30A/F

(M) = medium-delayed action (F) = fast

SAKS 3³⁾
SAKS 6



Fuse inserts 1 1/4" x 1/4" without indicator acc. to BS 88

Rated current (A)	Rated voltage (V)	Rated current (A)	Type
33 kA Breaking capacity 33 kA fast	440	0.5	GZ 0.5A/F
		1	GZ 1.0A/F
		2	GZ 2.0A
		3	GZ 3.0A
		5	GZ 5.0A
		7	GZ 7.0A
		10	GZ 10.0A
		12.5	GZ 12.5A FF

(F) = fast (M) = medium-delayed action

SAKS 2



D fuse inserts E 16 with indicator acc. to DIN 49360 (diazed)

Rated current (A)	Rated voltage (V)	Rated current (A)	Type
E 10 A E 16 A E 20 A E 25 A	500	10	E 16/10A RT
		16	E 16/16A GR
		20	E 16/20A BL
		25	E 16/25A GE

(F) = fast (M) = medium-delayed action

SAKS 4⁴⁾



D fuse inserts E 14 size D 01 and E 18 size D 02 with indicator acc. to DIN 49522 (neozed)⁵⁾

Rated current (A)	Rated voltage (V)	Rated current (A)	Type
E 14/2 E 14/4 E 14/6 E 14/10 E 14/16	400	2	E 14/2A RS
		4	E 14/4A BR
		6	E 14/6A GN
		10	E 14/10A RT
		16	E 14/16A GR
E 18/20 E 18/25 E 18/35 E 18/50 E 18/63	400	20	E 18/20A BL
		25	E 18/25A GE
		35	E 18/35A SW
		50	E 18/50A WS
		63	E 18/63A KU

(F) = fast (M) = medium-delayed action

Note: ¹⁾ The SIBA company also supplies 5 x 25 G fuse inserts with indicators in a shipbuilding model for 450 V AC.
²⁾ 5 x 30 (500 V AC) fuse inserts for SAKS 3 are available from the WICKMANN company
³⁾ The LINDNER company also supplies neozed fuse cartridges in an additional shipbuilding mode for 440 V AC.
⁴⁾ Fuse cartridges with the dimensions 1"x1/4" ≅ 25.4x6.35 mm and 13/32"x1/4" ≅ 10.3x38.1 mm are not included in product line.
⁵⁾ Only for SAKS 1 and SAKS 7.

Fuse inserts and gauge rings for Weidmüller fuse terminals

Gauge rings

Technical data

For terminal type

SAKS 4 and 4/35



Gauge ring type

Gauge ring type	Amp.	Colour	Typ
P 14/2	2	Pink	P 14/2D01 RS
P 14/4	4	Brown	P 14/4D01 BR
P 14/6	6	Green	P 14/6D01 GN
P 14/1	10	Red	P 14/10D01 RT

Order data

Qty.	Order No.
50	0138000000
50	0138100000
50	0328600000
50	0328700000

SAKS 5 and 5/35



P 18/20	20	Blue	P 18/20D02 BL
P 18/25	25	Yellow	P 18/25D02 GE
P 18/35	35	Black	P 18/35D02 SW
P 18/50	50	White	P 18/50D02 WS

50	0361800000
50	0361900000
50	0362000000
50	0362100000

SAKS 2 and 2/35



P 16/10	10	Red	P 16/10 RT
P 16/16	16	Grey	P 16/16 GR
P 16/20	20	Blue	P 16/20 BL

100	0208900000
100	0209000000
100	0209100000

Installation terminals

TS 35 / PA

This NT-terminals are used for isolated measurement without the disconnection of the wire.

When using ATEX certified components in hazardous area applications the installation instructions and the rated data for accessories in the technical appendix must be considered.

Width/Length/Height with TS35x7.5	mm
Max. current / max. cond. cross-section	A/mm ²
Max. clamping range	mm ²

Technical data

Rated data	
Rated voltage	V
Rated current	A
Rated cross-section	mm ²
Rated impulse voltage / Pollution severity	kV/-
Plug gauge IEC 60-947-1 / flammability class acc. UL 94	
Approvals	
Clampable conductors (H05V/H07V)	
Solid / stranded	mm ²
Flexible / flexible w. wire end ferrule	mm ²
Stripping length / blade size	mm / -
Tightening torque range (clamping screw)	Nm

Information

Order data

Version	Information
dark beige	
blue	

Accessories

Cross-connection	Information
2-pole	
3-pole	
4-pole	
10-pole	

End plate / partition	Information
beige	
blue	

Mounting plate for 10 x 3 (reqd. every 20 cm)	Information
blue	
for vertical mounting position	

Busbar 10 x 3 (140A)	Information
Lower edge busbar to upper edge TS35 = 25.5mm	

Tension clamp for feeding 10 x 3 busbars	Information
Rigid / flexible 0.5 - 6 / 4mm ²	
Rigid / flexible 6 - 16mm ²	
Standard version	



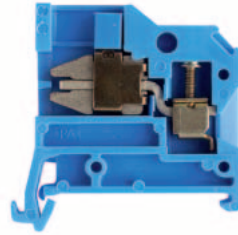
(ZB16)

Marking systems

Detailed information on all versions in chapter accessories.

NT 2.5/35

2.5 mm²



6 x 45 x 44	
24 / 4	NT
0.33 ... 4	

IEC 60947-7-1 / VDE 0611-4

IEC	UL	CSA	EN 50019
400	300	300	
24	20	25	
2.5	AWG 22... 12	AWG 22... 12	
		6 / 3	
		A3 / V2	



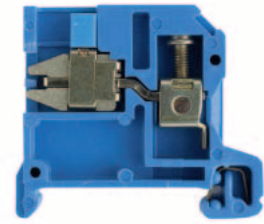
Rated connection

0.5...4 / 0.5...4
0.5...2.5 / 0.5...2.5
10 / 0.6 x 3.5
0.5...0.8 (M 2.5)

Tightening torque for the disconnect clamp 0.5 ... 0.8 Nm.

NT 6/35 (KrG)

6 mm²



8 x 49 x 44	
41 / 10	NT
0.5 ... 10	

IEC 60947-7-1 / VDE 0611-4

IEC	UL	CSA	EN 50019
400	300	300	
41	40	40	
6	AWG 22... 8	AWG 20... 10	
		6 / 3	
		A5 / 5VA	



Rated connection

0.5...10 / 0.5...10
0.5...10 / 0.5...6
12 / 0.8 x 4
0.8...1.4 Nm (M 3.5)

Tightening torque for the disconnect clamp 0.5 ... 0.8 Nm.

Type	Qty.	Order No.
NT 2.5/35 10X3 BL	100	0471780000

Type	Qty.	Order No.
NT 6/35 10X3 KR/BL	100	0501470000

Type	Current [A]	Qty.	Order No.

Width [mm]	Information

Width [mm]	Information
HP NT.5 BL	1.5 20 0352080000

Width [mm]	Information
SSCH 10X3X1000 CU/SN	1 0348900000

Width [mm]	Information
ZB 4	5.6 50 0316500000
ZB 16 ZKSC	50 0316600000
ZB 35/M6X16	20 0266500000

Type	Current [A]	Qty.	Order No.

Width [mm]	Information

Width [mm]	Information
HP NT6/10 BL	1.5 20 0352880000

Width [mm]	Information
SSCH 10X3X1000 CU/SN	1 0348900000

Width [mm]	Information
ZB 4	5.6 50 0316500000
ZB 16 ZKSC	50 0316600000
ZB 35/M6X16	20 0266500000

Marking systems

DEK 6

PEN-bridge and additional clamping yoke variants see chapter accessories. To use twin ferrules on request.

Marking systems

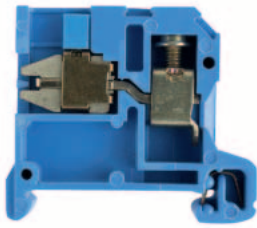
DEK 6

PEN-bridge and additional clamping yoke variants see chapter accessories. To use twin ferrules on request.

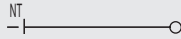
Installation terminals

NT 10/35

10 mm²



10 x 45 x 44
57 / 16
0.5 ... 16



IEC 60947-7-1 / VDE 0611-4

IEC	UL	CSA	EN 50019
400	300	300	
57	50	50	
10	AWG 14... 8	AWG 14... 8	
	6 / 3		
	B6 / V2		



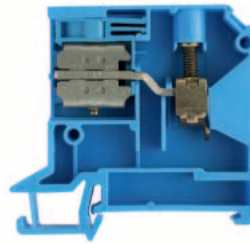
Rated connection

0.5...16 / 0.5...10
0.5...10 / 0.5...10
12 / 5.5 x 1.0
1.2...1.6 Nm (M 4)

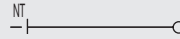
0.5...0.8 Nm tightening torque via disconnecter 10 mm² multistrand conductor tightened with 1.6 Nm

NT 16/35

16 mm²



12 x 59.5 x 58
76 / 16
2.5 ... 16



IEC 60947-7-1 / VDE 0611-4

IEC	UL	CSA	EN 50019
400	300	300	
76	65	70	
16	AWG 16... 6	AWG 12... 6	
	6 / 3		
	B6 / V2		



Rated connection

2.5...16 / 2.5...10
2.5...16 / 2.5
12 / 5.5 x 1.0
1.2...1.6 Nm (M 4)

Tightening torque for the disconnect lever 0.8 ... 1.4 Nm. Tightening torque for 10 and 16 mm² stranded with 1.6 Nm.

Type	Qty.	Order No.
NT 10/35 10X3 BL	50	0471880000

Type	Qty.	Order No.
NT 16/35 10X3 BL	50	0499280000

Type	Current [A]	Qty.	Order No.
Width [mm]			
Width [mm]			
HP NT6/10 BL	1.5	20	0352880000
Width [mm]			
SSCH 10X3X1000 CU/SN		1	0348900000
Width [mm]			
ZB 4	5.6	50	0316500000
ZB 16 ZKSC		50	0316600000
ZB 35/M6X16		20	0266500000

Type	Current [A]	Qty.	Order No.
Width [mm]			
Width [mm]			
HP NT16/10X3	2	20	1266380000
Width [mm]			
SSCH 10X3X1000 CU/SN		1	0348900000
Width [mm]			
ZB 4	5.6	50	0316500000
ZB 16 ZKSC		50	0316600000
ZB 35/M6X16		20	0266500000

DEK 6

For PEN jumpers and other cable grip variations see the Accessories section. Use of twin wire end ferrules on request.

DEK 5

PEN-bridge and additional clamping yoke variants see chapter accessories. To use twin ferrules on request.

Modular disconnect test terminals

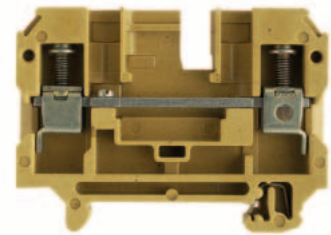
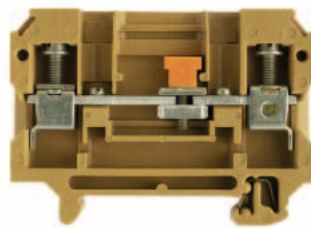
TS 35 / KrG

SAKT 1/LT

6 mm²

SAKT 1/DU1

6 mm²



When using ATEX certified components in hazardous area applications the installation instructions and the rated data for accessories in the technical appendix must be considered.

Width/Length/Height with TS35x7.5	mm
Max. current / max. cond. cross-section	A/mm ²
Max. clamping range	mm ²

8 x 65 x 52.5
57 / 10
0.13 ... 10

8 x 65 x 52.5
57 / 10
0.13 ... 10

Technical data

Rated data	
Rated voltage	V
Rated current	A
Rated cross-section	mm ²
Rated impulse voltage / Pollution severity	kV/-
Plug gauge IEC 60-947-1 / flammability class acc. UL 94	
Approvals	
Clampable conductors (H05V/H07V)	
Solid / stranded	mm ²
Flexible / flexible w. wire end ferrule	mm ²
Tightening torque range (clamping screw)	Nm
Tightening torque range disconnecter	Nm
Stripping length / blade size	mm / -
Information	

IEC 60947-7-1

IEC	UL	CSA	EN 50019
400	300	300	
41	25	25	
6	AWG 26... 8	AWG 26... 8	
		6 / 3	
		A5 / 5VA	

Rated connection **Additional connection**

0.5...10 / 1.5...10	
0.5...6 / 0.5...6	
0.8...1.6 (M 3.5)	
0.5...0.8	
12 / 4.0 x 0.8	

IEC 60947-7-1

IEC	UL	CSA	EN 50019
400	300	300	
41	25	25	
6	AWG 26... 8	AWG 26... 8	
		6 / 3	
		A5 / 5VA	

Rated connection **Additional connection**

0.5...10 / 1.5...10	
0.5...6 / 0.5...8	
0.8...1.6 (M 3.5)	
12 / 4.0 x 0.8	

Tightening torque 1.6 Nm for 10 mm² stranded wire.

Order data

Version	
Without socket	
with open back for cross-connection	
with 1 socket	
with 2 sockets	
with 4 sockets	
Information	

Type	Qty.	Order No.
SAKT 1/35/LT	50	0105420000
SAKT 1/35/LT STB	50	0105620000

Type	Qty.	Order No.
SAKT 1/35/DU1	50	0105820000

Accessories

Cross-connection	
ZQV: pluggable cross-connection	2-pole
	3-pole
	4-pole
	10-pole / 32-pole
Connecting sleeve for cross-conn. QL	
Fixing screw for cross-conn. QL	
End plate / partition	
End plate	
Partition	
Partition disc	
Cross-connection slider	
2-pole	
3-pole	
4-pole	
Connecting sleeve for QVS	
Fixing screw for QVS	
Testing/Checking	
Test plug	
Socket	
Socket	
Other accessories	
Lockout device	
Shorting plug, 2-pole	
Marking systems	
DEK 6,5	

Type	Current [A]	Qty.	Order No.
QL 2 SAK6N	57	50	0194300000
QL 3 SAK6N	57	50	0194400000
QL 4 SAK6N	57	50	0194500000
QL 10 SAK6N	57	20	0338300000
VH 12/4.9/3.3 SAK6N		100	0249000000
KISC M3X20 SAK10 CU5		100	0377100000
Width [mm]			
AP SAKB/C/T KRG	3	20	0146720000
TW SAKB/C/T1	1.5	20	0242960000
TSCH 2	0.6	100	0353660000
QVS 2 SAKT1+2		20	0307300000
QVS 3 SAKT1+2		20	0329300000
QVS 4 SAKT1+2		20	0307400000
VH 19/6/4.2 SAKT1		50	0318000000
BS 25 O.IH SAKT1		50	0334700000
PS 4 F.STB 4		20	0299600000
STB 14/D6/4/M3 SAK10		50	0169900000
SSP 3 SAKT1		100	0531760000
QS 2/8/4		20	0270960000

To safe the test sockets use the SD-blade or bits with pilots!

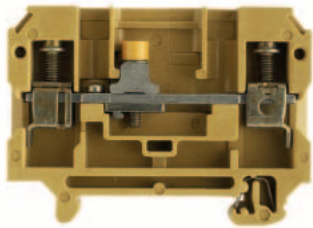
Type	Current [A]	Qty.	Order No.
QL 2 SAK6N	57	50	0194300000
QL 3 SAK6N	57	50	0194400000
QL 4 SAK6N	57	50	0194500000
QL 10 SAK6N	57	20	0338300000
VH 12/4.9/3.3 SAK6N		100	0249000000
KISC M3X20 SAK10 CU5		100	0377100000
Width [mm]			
AP SAKB/C/T KRG	3	20	0146720000
TW SAKB/C/T1	1.5	20	0242960000
TSCH 2	0.6	100	0353660000
QVS 2 SAKT1+2		20	0307300000
QVS 3 SAKT1+2		20	0329300000
QVS 4 SAKT1+2		20	0307400000
VH 19/6/4.2 SAKT1		50	0318000000
BS 25 O.IH SAKT1		50	0334700000
PS 4 F.STB 4		20	0299600000
STB 14/D6/4/M3 SAK10		50	0169900000
SSP 3 SAKT1		100	0531760000
QS 2/8/4		20	0270960000

To safe the test sockets use the SD-blade or bits with pilots!

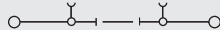
Modular disconnect test terminals

SAKT 1/QT

6 mm²



8 x 65 x 52.5
57 / 10
0.13 ... 10



IEC 60947-7-1

IEC	UL	CSA	EN 50019
400	300	300	
41	25	25	
6	AWG 26... 8	AWG 26... 8	
	6 / 3		
	A5 / 5VA		



Rated connection	Additional connection
0.5...10 / 1.5...10	
0.5...6 / 0.5...6	
0.8...1.6 (M 3.5)	
0.5...0.8	
12 / 4.0 x 0.8	

Tightening torque 1.6 Nm for 10 mm² stranded wire.

Type	Qty.	Order No.
SAKT 1/35/QT2	50	0124620000
SAKT 1/35/QT1	50	0105720000

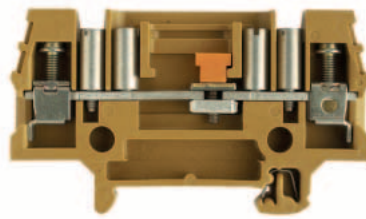
Type	Current [A]	Qty.	Order No.
QL 2 SAK6N	57	50	0194300000
QL 3 SAK6N	57	50	0194400000
QL 4 SAK6N	57	50	0194500000
QL 10 SAK6N	57	20	0338300000
VH 12/4.9/3.3 SAK6N		100	0249000000
KISC M3X20 SAK10 CU5		100	0377100000
Width [mm]			
AP SAKB/C/T KRG	3	20	0146720000
TW SAKB/C/T1	1.5	20	0242960000
TSCH 2	0.6	100	0353660000
QVS 2 SAKT1+2		20	0307300000
QVS 3 SAKT1+2		20	0329300000
QVS 4 SAKT1+2		20	0307400000
VH 19/6/4.2 SAKT1		50	0318000000
BS 25 O.IH SAKT1		50	0334700000
PS 4 F.STB 4		20	0299600000
STB 14/D6/4/M3 SAK10		50	0169900000
SSP 3 SAKT1		100	0531760000
QS 2/8/4		20	0270960000

DEK 6,5

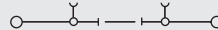
To safe the test sockets use the SD-blade or bits with pilots!

SAKT 2/LT

6 mm²



8 x 82 x 52.5
46 / 10
0.5 ... 10



IEC 60947-7-1

IEC	UL	CSA	EN 50019
400	300	300	
41	25	25	
6	AWG 22... 8	AWG 26... 8	
	6 / 3		
	A5 / 5VA		



Rated connection	Additional connection
0.5...10 / 1.5...6	
0.5...6 / 0.5...6	
0.8...1.6 (M 3.5)	
0.5...0.8	
12 / 4.0 x 0.8	

Tightening torque 1.6 Nm for 10 mm² stranded wire.

Type	Qty.	Order No.
SAKT 2/35/LT/STB	50	0105920000
SAKT 2/35/LT 4STB	50	0106020000

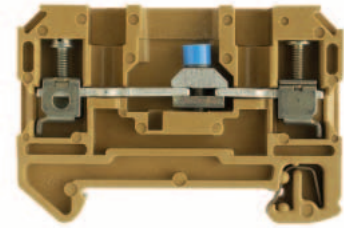
Type	Current [A]	Qty.	Order No.
QL 2 SAK6N	57	50	0194300000
QL 3 SAK6N	57	50	0194400000
QL 4 SAK6N	57	50	0194500000
QL 10 SAK6N	57	20	0338300000
VH 12/4.9/3.3 SAK6N		100	0249000000
BS 25 O.IH SAKT1		50	0334700000
Width [mm]			
AP SAKT2 KRG	3	20	0329120000
TW SAKT2	2.5	20	0351820000
TSCH 2	0.6	100	0353660000
QVS 2 SAKT1+2		20	0307300000
QVS 3 SAKT1+2		20	0329300000
QVS 4 SAKT1+2		20	0307400000
VH 19/6/4.2 SAKT1		50	0318000000
BS 25 O.IH SAKT1		50	0334700000
PS 4 F.STB 4		20	0299600000
STB 14/D6/4/M3 SAK10		50	0169900000
SSP 3 SAKT1		100	0531760000
QS 2/8/4		20	0270960000

DEK 6,5

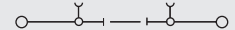
To safe the test sockets use the SD-blade or bits with pilots!

SAKT 4/35/LT

4 mm²



6 x 57.2 x 40
41 / 6
0.13 ... 6



IEC 60947-7-1

IEC	UL	CSA	EN 50019
400	300	300	
32	20	20	
4	AWG 22... 12	AWG 26... 10	
	6 / 3		
	A3 / 5VA		

Rated connection	Additional connection
0.5...6 / 1.5...4	
0.5...4 / 0.5...4	
0.4...0.7 (M 2.5)	
0.4...0.7	
10 / 3.5 x 0.6	

Tightening torque 1.6 Nm for 10 mm² stranded wire.

Type	Qty.	Order No.
SAKT 4/35/LT O.STB	50	1272420000
SAKT 4/35/LT STB2.0	50	1272520000

Type	Current [A]	Qty.	Order No.
QL 2 SAK2.5	41	100	0155900000
QL 3 SAK2.5	41	100	0156000000
QL 4 SAK2.5	41	50	0156100000
QL 10 SAK2.5	41	20	0338100000
VH 8/4.9/3.3 SAK2.5		100	0266700000
KISC M3X15/6 SAK2.5 CU5		100	0377200000
Width [mm]			
AP SAKT4 KRG	3	20	0244920000
TW AST1/PA HP/DBR/0.5	0.5	20	0474700000
TSCH 2	0.6	100	0353660000
QVS 2/4 SAKT4		20	1319260000
VH 16/5/3.5 SAK10-35		50	0309700000
BFSC M3X22 SAKT4		50	1319900000
PS 2.0 OR		20	0293800000
STB 8.5/D4.5/2/M3 SAKT4		50	0244600000
STB 8.5/5/2.3/M3 SAK2.5		50	0280600000
SSP 4 SAKT4		20	1319360000

DEK 6,5

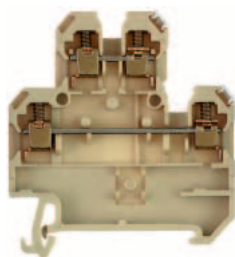
To safe the test sockets use the SD-blade or bits with pilots!

Feed-through terminals for thermocouples

Thermocouple-terminals
TS 35/PA

Busbars made from thermocouple materials according to DIN IEC 584

DK 4 Q/TC



Width/length/height with TS35x7.5	mm
max. current / max. conductor	A/mm ²
max. clamping range	mm ²

6 x 54 x 60.5
/ 4
0.5 ... 4

Technical data

Measure/Approvals	
Width/length/height (mm)	with TS 35 x 7.5
Insulation stripping length/clamping screw/screwdriver blade	9 mm/M 3/3.5 x 0.6

Technical data/VDE	
Insulation stripping length/clamping screw/screwdriver blade	mm ²

Tightening torque range	Nm
-------------------------	----

Ordering data

Version	Type
NiCr	
Ni	
CuNi	
Fe	
Cu	
NiCr/Ni	K
Cu/CuNi	T
Fe/CuNi	J

Qty.	Order No.
100	1284160000
100	1285660000
100	1284060000

End plate	Type
PA	AP (1.5)



Type	Width [mm]	Qty.	Order No.
AP (1.5)	1.5	20	1397160000

Partition	Type
WEM for TS 32 HP	WTW EN
	TW HP

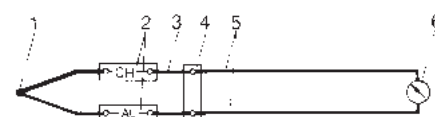


Type	Width [mm]	Qty.	Order No.
WTW EN	3.0	20	1058800000
TW HP	2.0	20	0607000000

Labelling systems	Type
Labelling tags	DEK 6

Weidmüller's **thermocouple-terminals** are specially designed for transmitting the smallest voltages in temperature measuring circuits. Special busbars ensure that no false signals occur in the terminal when temperature differences exist in the positive and negative path. This high measuring precision is necessary for, e.g. test beds, air craft engines, for complicated chemical processes, controls, etc.

I. Configuration of a temperature measuring circuit



- 1 Thermocouple (sensor)
- 2 Thermocouple terminals
- 3 Compensation conductor
- 4 Reference point
- 5 Supply conductors (to and from)
- 6 Measuring device

The thermocouple terminals displayed in this measurement circuit are used to thermoelectrically transmit thermal e.m.f. of the thermocouple to the reference point and indicating device via the thermocouple.

II. Symbols Thermocouples according to IEC 584 DIN 43710

Terminal	Busbar material trade name
a) Type J	
Fe (positive leg)	Iron
CuNi (negative leg)	Constantan
b) Type T	
Cu (positive leg)	Copper
CuNi (negative leg)	Constantan
c) Type K	
NiCr (positive leg)	Chromel
Ni (negative leg)	Alumel

Detailed information on other accessories and their use can be found in the "Accessories" section.

Further versions on request.

Modular terminals with screwless connection

A

With tab connection TS 35 / PA

When using ATEX certified components in hazardous area applications the installation instructions and the rated data for accessories in the technical appendix must be considered.

Width/Length/Height with TS35x7.5	mm
Max. current / max. cond. cross-section	A/mm ²
Max. clamping range	mm ²

Technical data

Rated data	
Rated voltage	V
Rated current	A
Rated cross-section	mm ²
Rated impulse voltage / Pollution severity	kV/-
Plug gauge IEC 60-947-1 / flammability class acc. UL 94	
Approvals	

Clampable conductors (H05V/H07V)	
Solid / stranded	mm ²
Flexible / flexible w. wire end ferrule	mm ²
Tightening torque range (clamping screw)	Nm
Stripping length / blade size	mm / -

2 clampable conductors of equal cross-section	
Solid / stranded	mm ²
Flexible / flexible w. wire end ferrule	mm ²


Information

Order data

Version	
slotted	
Unslotted	
slotted blue	
Unslotted blue	

Information

Accessories

Cross-connection	
	2-pole
	3-pole
	4-pole
	10-pole

Plug adapter	
	2-pole
	3-pole
	4-pole
	5-polig
	8-pole

End plate / partition	
End plate	
Partition	
Partition disc	

Testing/Checking	
for testing	PS
wired terminal strips	StB

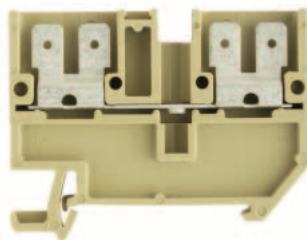
Insulating sleeve	
	2,8
	6,3

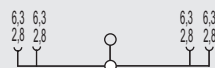
Marking systems

For detailed information on other accessories and applications see "Accessories"

AST 1 / 35

2.5 mm²



6.5 x 58 x 46	
20 / 4	
0.2 ... 4	

IEC 60947-7-1 / IEC 61210

IEC	UL	CSA	EN 50019
800	600	300	
20	13	16	
2.5			
	6 / 3		
	/ V2		



Rated connection	Additional connection

For tab connection use a insulated sleeve.

Type	Qty.	Order No.
AST 1/35 6.3/2.8	50	0699660000
AST 1/35 6.3	50	0664860000

Type	Current [A]	Qty.	Order No.
Q 2 SAK4	41	50	0336700000
Q 3 SAK4	41	50	0336800000
Q 4 SAK4	41	50	0336900000
Q 10 SAK4	41	20	0368800000

Width [mm]			
AP AST1+5 DB	1.5	20	0266400000
TW SAKS2 HP/DBR/2	2	20	0607000000
TSCH 1	2	100	0319160000

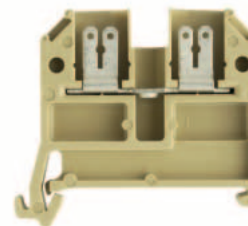
PS 2,3 RT	20	0180400000
STB 14/D5/2.3/M3 SAK2.5	50	0168600000

IH 2.8 DB	100	0386060000
IH 6.3 WEM GE	100	0386260000

DEK 6

AST 3/35

2.5 mm²



6.5 x 44 x 40.1	
20	

IEC 60947-7-1 / IEC 61210

IEC	UL	CSA	EN 50019
800	300	300	
20	13	16	
2.5			
	6 / 3		
	/ V2		



Rated connection	Additional connection

For tab connection use a insulated sleeve.

Type	Qty.	Order No.
AST 3/35 6.3/2.8	100	0460360000
AST 3/35 6.3	100	0479360000

Type	Current [A]	Qty.	Order No.
Q 2 SAK4	41	50	0336700000
Q 3 SAK4	41	50	0336800000
Q 4 SAK4	41	50	0336900000
Q 10 SAK4	41	20	0368800000

STA 2,5/2	100	0165860000
STA 2,5/3	50	0165960000
STA 2,5/4	50	0190360000
STA 2,5/5	50	0166060000
STA 2,5/8	50	0166160000

Width [mm]			
AP AST3+4 KRG	3	20	0298120000
TW 4 SAK4-10	1.5	20	0130160000
TSCH 1	2	100	0319160000

PS 2,3 RT	20	0180400000
STB 14/D5/2.3/M3 SAK2.5	50	0168600000

IH 2.8 DB	100	0386060000
IH 6.3 WEM GE	100	0386260000

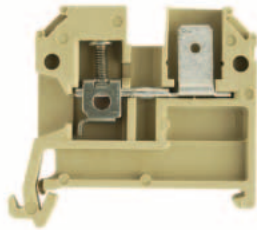
DEK 6

Pluggable adapter STA 2,5/2 - STA 2,5/8 only for PA - Version.

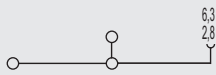
Modular terminals with screwless connection

AST 4/35

2.5 mm²



6.2 x 43.5 x 40.1
20 / 4
0.2 ... 4



IEC 60947-7-1 / IEC 61210

IEC	UL	CSA	EN 50019
800	300	300	
20	13	16	
2.5	AWG 22... 12	AWG 24... 12	
	6 / 3		
	A3 / V2		



Rated connection	Additional connection
0.5...4 / 1.5...2.5	
0.5...2.5 / 0.5...2.5	
0.4...0.7 (M 2.5)	
9 / 3.5 x 0.6	

For tab connection use a insulated sleeve.

Type	Qty.	Order No.
AST 4/35 SF 6.3/2.8	100	0460460000
AST 4/35 SF 6.3	100	0479460000

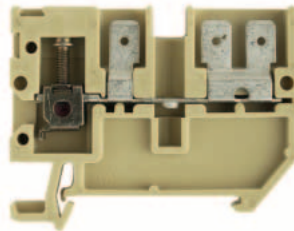
Type	Current [A]	Qty.	Order No.
Q 2 SAK4	41	50	0336700000
Q 3 SAK4	41	50	0336800000
Q 4 SAK4	41	50	0336900000
Q 10 SAK4	41	20	0368800000
STA 2.5/2		100	0165860000
STA 2.5/3		50	0165960000
STA 2.5/4		50	0190360000
STA 2.5/5		50	0166060000
STA 2.5/8		50	0166160000
Width [mm]			
AP SAK2.5/35 + AST3+4	1.5	20	0460560000
TW 4 SAK4-10	1.5	20	0130160000
TSCH 1	2	100	0319160000
PS 2.3 RT		20	0180400000
STB 14/D5/2.3/M3 SAK2.5		50	0168600000
IH 2.8 DB		100	0386060000
IH 6.3 WEM GE		100	0386260000

DEK 6

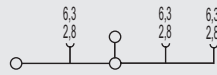
Pluggable adapter STA 2,5/2 - STA 2,5/8 only for PA - Version.

AST 5/35

4 mm²



6.5 x 58 x 46
20 / 6
0.2 ... 6



IEC 60947-7-1 / IEC 61210

IEC	UL	CSA	EN 50019
800	300	300	
20	13	16	
4	AWG 22... 12	AWG 24... 12	
	6 / 3		
	A4 / V2		



Rated connection	Additional connection
0.5...6 / 1.5...2.5	
0.5...4 / 0.5...4	
0.5...1.0 (M 3)	
12 / 3.5 x 0.6	

For tab connection use a insulated sleeve.

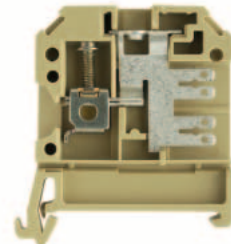
Type	Qty.	Order No.
AST 5/35 SF 6.3/2.8 DB	50	0664900000
AST 5/35 SF 6.3 DB	50	0699700000

Type	Current [A]	Qty.	Order No.
Q 2 SAK4	41	50	0336700000
Q 3 SAK4	41	50	0336800000
Q 4 SAK4	41	50	0336900000
Q 10 SAK4	41	20	0368800000
Width [mm]			
AP AST1+5 DB	1.5	20	0266400000
TW AST1/PA HP/DBR/0.5	0.5	20	0474700000
PS 2.3 RT		20	0180400000
STB 14/D5/2.3/M3 SAK2.5		50	0168600000
IH 2.8 DB		100	0386060000
IH 6.3 WEM GE		100	0386260000

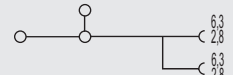
DEK 6,5

SAK 4 S/35

4 mm²



6.5 x 45 x 49.5
20 / 6
0.13 ... 6



IEC 60947-7-1 / IEC 61210

IEC	UL	CSA	EN 50019
500	600	300	
20	13	13	
4	AWG 26... 12	AWG 26... 12	
	6 / 3		
	A4 / V2		



Rated connection	Additional connection
0.33...6 / 1.5...4	
0.5...4 / 0.5...4	
0.5...1.0 (M 3)	
12 / 3.5 x 0.6	

For tab connection use a insulated sleeve.

Type	Qty.	Order No.
SAK 4 S/35 6.3/2.8	100	0630360000

Type	Current [A]	Qty.	Order No.
QL 2 SAK4	32	100	0130600000
QL 3 SAK4	32	100	0130700000
QL 4 SAK4	32	50	0130800000
QL 10 SAK4	32	20	0338200000
Width [mm]			
AP SAK4-10	1.5	20	0117960000
TW 4 SAK4-10	1.5	20	0130160000
PS 2.3 RT		20	0180400000
STB 14/D5/2.3/M3 SAK2.5		50	0168600000
IH 2.8 DB		100	0386060000
IH 6.3 WEM GE		100	0386260000

DEK 6,5

Modular terminals with screwless connection

A

With tab connection TS 35 / PA

When using ATEX certified components in hazardous area applications the installation instructions and the rated data for accessories in the technical appendix must be considered.

Width/Length/Height with TS35x7.5	mm
Max. current / max. cond. cross-section	A/mm ²
Max. clamping range	mm ²

Technical data

Rated data	
Rated voltage	V
Rated current	A
Rated cross-section	mm ²
Rated impulse voltage / Pollution severity	kV/-
Plug gauge IEC 60-947-1 / flammability class acc. UL 94 Approvals	

Clampable conductors (H05V/H07V)	
Solid / stranded	mm ²
Flexible / flexible w. wire end ferrule	mm ²
Tightening torque range (clamping screw)	Nm
Stripping length / blade size	mm / -

2 clampable conductors of equal cross-section	
Solid / stranded	mm ²
Flexible / flexible w. wire end ferrule	mm ²


Information

Order data

Version
slotted
Unslotted
slotted blue
Unslotted blue

Information

Accessories

Cross-connection	
	2-pole
	3-pole
	4-pole
(Q)	10-pole

Plug adapter	
	2-pole
	3-pole
	4-pole
	5-polig
	8-pole

End plate / partition	
	End plate
	Partition
	Partition disc

Testing/Checking	
for testing	PS
wired terminal strips	StB

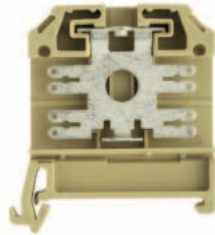
Insulating sleeve	
	2,8
	6,3

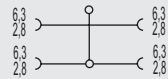
Marking systems

For detailed information on other accessories and applications see "Accessories"

SAK 4 SS/35

4 mm²



6.5 x 45 x 49.5	
20 / 4	
0.13 ... 4	

IEC 60947-7-1 / IEC 61210

IEC	UL	CSA	EN 50019
500	600	300	
20	13	13	
4	AWG 26... 12	AWG 26... 12	
6 / 3 / V2			



Rated connection	Additional connection

Information
For tab connection use a insulated sleeve.

Type	Qty.	Order No.
SAK 4 SS/35 6.3/2.8	100	0630460000

Type	Current [A]	Qty.	Order No.
QL 2 SAK4	32	100	0130600000
QL 3 SAK4	32	100	0130700000
QL 4 SAK4	32	50	0130800000
QL 10 SAK4	32	20	0338200000

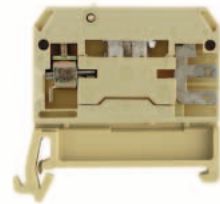
Width [mm]			
AP SAK4-10	1.5	20	0117960000
TW 4 SAK4-10	1.5	20	0130160000

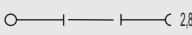
IH 2.8 DB	100	0386060000
IH 6.3 WEM GE	100	0386260000

DEK 6,5

SAKR F

4 mm²



6.5 x 42 x 40.5	
10 / 4	
0.13 ... 4	

IEC 60947-7-1 / IEC 61210 / VDE 0100-537

IEC	UL	CSA	EN 50019
250	300	300	
10	10	10	
4	AWG 22... 12	AWG 22... 12	
6 / 3 A3 / V2			



Rated connection	Additional connection
0.5...4 / 1.5...4	
0.5...4 / 0.5...2.5	
0.5...1.0 (M3)	
8 / 3.5 x 0.6	

Information

Type	Qty.	Order No.
SAKR F/35	100	6382670000

Type	Current [A]	Qty.	Order No.
QB 2 WI RA6 IS	27	50	0482700000
QB 3 WI RA6 IS	27	50	0482800000
QB 4 WI RA6 IS	27	50	0482900000

Width [mm]			
AP SAKR BE	1.5	20	0211360000

PS 2.3 RT	20	0180400000
STB 6/D3.7/2.3/M3 SAKR	100	0379400000

IH 2.8 DB	100	0386060000
-----------	-----	------------

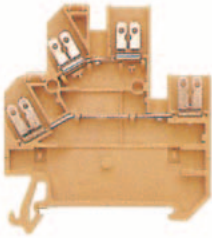
DEK 6,5

QB 25 blank, see chapter accessories. To use twin ferrules ZH 0,5 to ZH 1,5 is possible.

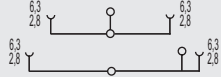
Modular terminals with screwless connection

DK 4 SS/35

1 mm²



6 x 54 x 60.5
20 / 2.5
0.33 ... 2.5



IEC 60947-7-1 / IEC 61210

IEC	UL	CSA	EN 50019
400	300	300	
20	10	10	
1	AWG 22... 12	AWG 22... 12	
	4 / 3		
	/ V2		

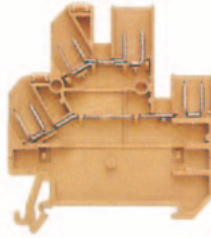


Rated connection **Additional connection**

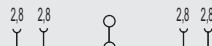
For tab connection use a insulated sleeve.

DK 4 SS/35 2.8

1 mm²



6 x 54 x 60.5
/ 2.5
0.33 ... 2.5



IEC 60947-7-1 / IEC 61210

IEC	UL	CSA	EN 50019
400	300	300	
20	10	10	
1	AWG 22... 12	AWG 22... 12	
	4 / 3		
	/ V2		

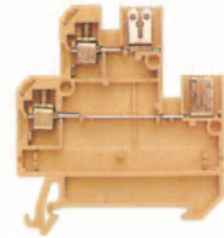


Rated connection **Additional connection**

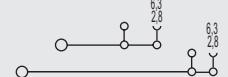
For tab connection use a insulated sleeve.

DK 4 S

4 mm²



6 x 54 x 59.5
/ 4
0.33 ... 4



IEC 60947-7-1 / IEC 61210

IEC	UL	CSA	EN 50019
400	300	300	
10	10	10	
4	AWG 22... 12	AWG 22... 12	
	6 / 3		
	A3 / V2		



Rated connection **Additional connection**

0.5...4 / 1.5...4
0.5...4 / 0.5...2.5
0.5...0.8 (M3)
8 / 3.5 x 0.6

For tab connection use a insulated sleeve.

Type	Qty.	Order No.
DK 4SS/35 FF 4X6.3/2.8	100	0217160000

Type	Qty.	Order No.
DK 4SS/35 FF 8X2.8	100	0297060000

Type	Qty.	Order No.
DK 4S/35 SF 6.3/2.8	100	0686660000

Type	Current [A]	Qty.	Order No.
Q 2 AKZ4	32	50	0336400000
Q 3 AKZ4	32	50	0336500000
Q 4 AKZ4	32	50	0336600000
Q 10 AKZ4	32	20	0368600000

Type	Current [A]	Qty.	Order No.
Q 2 AKZ4	32	50	0336400000
Q 3 AKZ4	32	50	0336500000
Q 4 AKZ4	32	50	0336600000
Q 10 AKZ4	32	20	0368600000

Type	Current [A]	Qty.	Order No.
Q 2 AKZ4	32	50	0336400000
Q 3 AKZ4	32	50	0336500000
Q 4 AKZ4	32	50	0336600000
Q 10 AKZ4	32	20	0368600000

Width [mm]			
AP DK4S	20		0631360000
TSCH 6 DKI S4	5	100	0190260000
PS 2.3 RT	20		0180400000
STB 8.5/D4/2.3/M2.5 AKZ	50		0215700000
IH 2.8 DB	100		0386060000
IH 6.3 WEM GE	100		0386260000

Width [mm]			
AP DK4S	20		0631360000
TSCH 6 DKI S4	5	100	0190260000
PS 2.3 RT	20		0180400000
STB 8.5/D4/2.3/M2.5 AKZ	50		0215700000
IH 2.8 DB	100		0386060000

Width [mm]			
AP DK4S	20		0631360000
TSCH 6 DKI S4	5	100	0190260000
PS 2.3 RT	20		0180400000
STB 8.5/D4/2.3/M2.5 AKZ	50		0215700000
IH 2.8 DB	100		0386060000
IH 6.3 WEM GE	100		0386260000

DEK 6

DEK 6

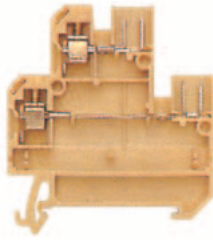
DEK 6

Modular terminals with screwless connection

With tab connection TS 35 / PA

DK 4 S 2.8

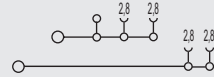
4 mm²



When using ATEX certified components in hazardous area applications the installation instructions and the rated data for accessories in the technical appendix must be considered.

Width/Length/Height with TS35x7.5	mm
Max. current / max. cond. cross-section	A/mm ²
Max. clamping range	mm ²

6 x 54 x 59.5
10 / 4
0.33 ... 4



Technical data

Rated data	
Rated voltage	V
Rated current	A
Rated cross-section	mm ²
Rated impulse voltage / Pollution severity	kV/-
Plug gauge IEC 60-947-1 / flammability class acc. UL 94	
Approvals	

IEC 60947-7-1 / IEC 61210

IEC	UL	CSA	EN 50019
400	300	300	
10	10	10	
4	AWG 22... 12	AWG 22... 12	
		6 / 3	
		A3 / V2	



Clampable conductors (H05V/H07V)	
Solid / stranded	mm ²
Flexible / flexible w. wire end ferrule	mm ²
Tightening torque range (clamping screw)	Nm
Stripping length / blade size	mm / -

Rated connection	Additional connection
0.5...4 / 1.5...4	
0.5...4 / 0.5...2.5	
0.5...0.8 (M 3)	
8 / 3.5 x 0.6	

2 clampable conductors of equal cross-section	
Solid / stranded	mm ²
Flexible / flexible w. wire end ferrule	mm ²

Information
For tab connection use a insulated sleeve.

Order data

Version
slotted
Unslotted
slotted blue
Unslotted blue

Type	Qty.	Order No.
DK 4S/35 SF 4X2.8	100	0686560000

Information

Accessories

Cross-connection	
	2-pole
	3-pole
	4-pole
	10-pole

Type	Current [A]	Qty.	Order No.
Q 2 AKZ4	32	50	0336400000
Q 3 AKZ4	32	50	0336500000
Q 4 AKZ4	32	50	0336600000
Q 10 AKZ4	32	20	0368600000

Plug adapter	
	2-pole
	3-pole
	4-pole
	5-polig
	8-pole

End plate / partition	
End plate	
Partition	
Partition disc	

Width [mm]			
AP DK4S	20		0631360000
TSCH 6 DKI S4	5	100	0190260000

Testing/Checking	
for testing	PS
wired terminal strips	StB

PS 2,3 RT	20		0180400000
STB 8.5/D4/2.3/M2.5 AKZ	50		0215700000

Insulating sleeve	
	2,8
	6,3

IH 2.8 DB	100		0386060000
-----------	-----	--	-------------------

Marking systems
DEK 6

For detailed information on other accessories and applications see "Accessories"

Modular terminals with screwless connections

with solder connection
TS35 / PA

When using ATEX certified components in hazardous area applications the installation instructions and the rated data for accessories in the technical appendix must be considered.

Width/Length/Height with TS35x7.5	mm
Max. current / max. cond. cross-section	A/mm ²
Max. clamping range	mm ²


Technical data

Rated data	
Rated voltage	V
Rated current	A
Rated cross-section	mm ²
Rated impulse voltage / Pollution severity	kV/-
Plug gauge IEC 60-947-1 / flammability class acc. UL 94	
Approvals	
Clampable conductors (H05V/H07V)	
Solid / stranded	mm ²
Flexible / flexible w. wire end ferrule	mm ²
Tightening torque range (clamping screw)	Nm
Stripping length / blade size	mm / -
2 clampable conductors of equal cross-section	
Solid / stranded	mm ²
Flexible / flexible w. wire end ferrule	mm ²
Information	

Order data

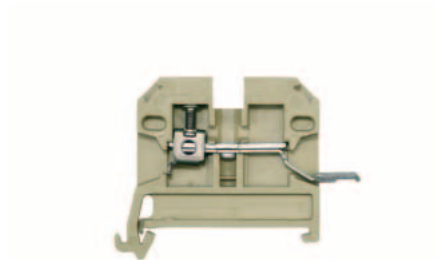
Version	Information
beige	
blue	

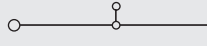
Accessories

Cross-connection, screwable	
	(Q)
2-pole	
3-pole	
4-pole	
10-pole	
Connecting sleeve	
Fixing screw	
Fuse cartridges	
Cross-connection saddle	
Cross-connection saddle	
Connecting sleeve	
Fixing screw	
Socket / Test plug	
Socket	
Test plug	
End plate	
beige	
blue	
Partition / Partition disc	
beige	
blue	
Partition disc	
Cover / fixing screw (plastic)	
Cover	
Fixing screw (plastic)	
Marking systems	
DEK 6	
Detailed information on all versions in chapter accessories.	

SAK 2.5 L

2.5 mm²



6 x 44 x 46.5	
17.5 / 6	
0.33 ... 6	

IEC 60947-7-1 / IEC 60068-2-20

IEC	UL	CSA	EN 50019
250		300	
17.5		10	
2.5		AWG 22...12	
		4 / 3	
		A3 / V2	



Rated connection	Additional connection
0.5...6 / 0.5...2.5	
0.5...4 / 0.5...2.5	
0.4...0.7 (M 2.5)	
12 / 3.5 x 0.6	

SAK 2.5 LL

1.5 mm²

solder connection both sides



6 x 54 x 46.5	
17.5 / 3.3	
0.13 ... 3.3	

IEC 60947-7-1 / IEC 60068-2-20

IEC	UL	CSA	EN 50019
250		300	
17.5		10	
1.5		AWG 26...12	
		4 / 3	
		/ V2	



Rated connection	Additional connection

Type	Qty.	Order No.
SAK 2.5/35 SL	100	0495060000
SAK 2.5/35 LL	100	0567260000

Type	Current [A]	Qty.	Order No.
Q 2 SAK2.5	41	50	0337000000
Q 3 SAK2.5	41	50	0337100000
Q 4 SAK2.5	41	50	0337200000
Q 10 SAK2.5	41	20	0368700000
Width [mm]			
AP SAK2.5	1.5	20	0279560000
AP SAK2.5 BL	1.5	20	0279580000
Width [mm]			
TW SAK2.5	2.5	20	0302860000
TW SAK2.5 HP/TF/GE/1	1	20	0297100000
TSCH 1	2	100	0319160000
Width [mm]			
AD 4 AKZ4	50		0303400000
BFSC M3X22 PA/RT	100		0128900000
Width [mm]			
DEK 6			

Special terminal - SAKG

TS 35 / KRG

SAKG 32 I

50 mm²

TS 35 / KRG

A

When using ATEX certified components in hazardous area applications the installation instructions and the rated data for accessories in the technical appendix must be considered.

Width/Length/Height with TS35x7.5	mm
Max. current / max. cond. cross-section	A/mm ²
Max. clamping range	mm ²

32 x 87 x 84.5
192 / 70
10 ... 70



Technical data

Rated data	
Rated voltage	V
Rated current	A
Rated cross-section	mm ²
Rated impulse voltage / Pollution severity	kV/-
Plug gauge IEC 60-947-1 / flammability class acc. UL 94	
Approvals	

IEC 60947-7-1

IEC	UL	CSA	EN 50019
1000	600	600	
150	165	170	
50	AWG 6...3/0	AWG 1...2/0	
			8 / 3
B11 / 5VA			



Clampable conductors (H05V/H07V)	
Solid / stranded	mm ²
Flexible / flexible w. wire end ferrule	mm ²
Tightening torque range (clamping screw)	Nm
Stripping length / blade size	mm / -

Rated connection	Additional connection
10...16 / 10...70	
10...70 / 10...35	
6.0...12 (M 8)	
26	

2 clampable conductors of equal cross-section	
Solid / stranded	mm ²
Flexible / flexible w. wire end ferrule	mm ²

Information


Order data

Version
yellow
blue

Type	Qty.	Order No.
SAKG 32/35 I	10	0637120000

Information

Accessories

Cross-connection, screwable	
	
	(Q)
	2-pole
	3-pole
	4-pole
	10-pole
	Connecting sleeve
	Fixing screw
	Fuse cartridges

Type	Current [A]	Qty.	Order No.
QL 2 SAKG32+70	150	5	0194000000
QL 3 SAKG32+70	150	5	0441500000
QL 4 SAKG32+70	150	5	0441600000

Cross-connection saddle	
	Cross-connection saddle
	Connecting sleeve
	Fixing screw

Socket / Test plug	
	Socket
	Test plug

End plate	
	dark brown
	for tropical applications

Width [mm]			
EP 2 SAKG46/35 HP/DBR	2	10	0180700000
EP 2 SAKG46/35 HP/TF/GE	2	10	0180800000

Partition / Partition disc	
	dark brown
	for tropical applications
	Partition disc

Width [mm]			
TW SAKG46 HP/DBR/2	2	10	0177100000
TW SAKG46 HP/TF/GE/2	2	10	0179900000

Cover / fixing screw (plastic)	
	Cover
	Fixing screw (plastic)

AH 32 SAKG32	5	0326760000
--------------	---	------------

Marking systems

DEK 5

Detailed information on all versions in chapter accessories.

Special terminal - SAKG

TS 35 / KRG

SAKG 32 II

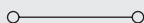
50 mm²

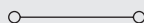
SAKG 32 II G

50 mm²

When using ATEX certified components in hazardous area applications the installation instructions and the rated data for accessories in the technical appendix must be considered.

Width/Length/Height with TS35x7.5	mm
Max. current / max. cond. cross-section	A/mm ²
Max. clamping range	mm ²

32 x 80 x 53	
192 / 70	
10 ... 70	

32 x 80 x 53	
192 / 70	
10 ... 70	

Technical data

Rated data	
Rated voltage	V
Rated current	A
Rated cross-section	mm ²
Rated impulse voltage / Pollution severity	kV/-
Plug gauge IEC 60-947-1 / flammability class acc. UL 94	
Approvals	

IEC 60947-7-1

IEC	UL	CSA	EN 50019
1000	600	600	
150	200	170	
50	AWG 6...3/0	AWG 1...2/0	
		8 / 3	
		/ 5VA	

IEC 60947-7-1

IEC	UL	CSA	EN 50019
1000	600	600	
150	200	170	
50	AWG 6...3/0	AWG 1...2/0	
		8 / 3	
		/ 5VA	

Clampable conductors (H05V/H07V)	
Solid / stranded	mm ²
Flexible / flexible w. wire end ferrule	mm ²
Tightening torque range (clamping screw)	Nm
Stripping length / blade size	mm / -

Rated connection		Additional connection	
6.0...12 (M 8)			

Rated connection		Additional connection	
6.0...12 (M 8)			

2 clampable conductors of equal cross-section	
Solid / stranded	mm ²
Flexible / flexible w. wire end ferrule	mm ²

Information

Order data


Version	
	yellow
	blue

Type	Qty.	Order No.
SAKG 32/35 II	10	0637320000

Type	Qty.	Order No.
SAKG 32/35 II/GW	10	0637420000

Information

Accessories

Cross-connection, screwable	
	2-pole
	3-pole
	4-pole
	10-pole
	Connecting sleeve
	Fixing screw
	Fuse cartridges

Type	Current [A]	Qty.	Order No.
QL 2 SAKG32+70	150	5	0194000000
QL 3 SAKG32+70	150	5	0441500000
QL 4 SAKG32+70	150	5	0441600000

Type	Current [A]	Qty.	Order No.
QL 2 SAKG32+70	150	5	0194000000
QL 3 SAKG32+70	150	5	0441500000
QL 4 SAKG32+70	150	5	0441600000

Cross-connection saddle	
	Cross-connection saddle
	Connecting sleeve
	Fixing screw

Socket / Test plug	
	Socket
	Test plug

End plate	
	dark brown
	for tropical applications

Width [mm]	
EP 2 SAKG46/35 HP/DBR	2 10 0180700000
EP 2 SAKG46/35 HP/TF/GE	2 10 0180800000

Width [mm]	
EP 1 SAKG32/35 HP/DBR	2 10 0180500000
EP 1 SAKG32/35 HP/TF/GE	2 10 0180600000

Partition / Partition disc	
	dark brown
	for tropical applications
	Partition disc

Width [mm]	
TW SAKG46 HP/DBR/2	2 10 0177100000
TW SAKG46 HP/TF/GE/2	2 10 0179900000

Width [mm]	
TW SAKG28 HP/DBR/2	2 10 0151400000
TW SAKG28 HP/TF/GE/2	2 10 0164600000

Cover / fixing screw (plastic)	
	Cover
	Fixing screw (plastic)

AH 32 SAKG32	5	0326760000
--------------	---	------------

AH 32 SAKG32	5	0326760000
--------------	---	------------

Marking systems

DEK 5

DEK 5

Detailed information on all versions in chapter accessories.

Special terminal - SAKG

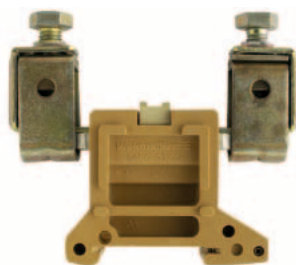
TS 35 / KRG

SAKG 32 III

50 mm²

SAKG 70 II G

70 mm²



When using ATEX certified components in hazardous area applications the installation instructions and the rated data for accessories in the technical appendix must be considered.

Width/Length/Height with TS35x7.5	mm
Max. current / max. cond. cross-section	A/mm ²
Max. clamping range	mm ²

32 x 94 x 84.5	
192 / 70	
10 ... 70	

32 x 84 x 51.4	
192 / 95	
16 ... 95	

Technical data

Rated data	
Rated voltage	V
Rated current	A
Rated cross-section	mm ²
Rated impulse voltage / Pollution severity	kV/-
Plug gauge IEC 60-947-1 / flammability class acc. UL 94	
Approvals	

IEC 60947-7-1			
IEC	UL	CSA	EN 50019
1000	600	600	
150	165	185	
50	AWG 6...3/0	AWG 1...2/0	
	8 / 3		
	B11 / 5VA		

IEC 60947-7-1			
IEC	UL	CSA	EN 50019
1000		600	
192		200	
70		AWG 2/0...4/0	
	8 / 3		
	/ 5VA		

Clampable conductors (H05V/H07V)	
Solid / stranded	mm ²
Flexible / flexible w. wire end ferrule	mm ²
Tightening torque range (clamping screw)	Nm
Stripping length / blade size	mm / -

Rated connection		Additional connection	
10...16 / 10...70			
10...70 / 10...35			
6.0...12 (M 8)			
26			

Rated connection		Additional connection	
10...16 / 10...95			
10...95			
6.0...12 (M 8)			

2 clampable conductors of equal cross-section	
Solid / stranded	mm ²
Flexible / flexible w. wire end ferrule	mm ²

Information

Order data

Version	
	yellow
	blue

Type	Qty.	Order No.
SAKG 32/35 III	10	0637220000

Type	Qty.	Order No.
SAKG 70/35 II/GW	10	0636620000

Information

Accessories

Cross-connection, screwable	
	2-pole
	3-pole
	4-pole
	10-pole
	Connecting sleeve
	Fixing screw
	Fuse cartridges

Type	Current [A]	Qty.	Order No.

Type	Current [A]	Qty.	Order No.
QL 2 SAKG32+70	150	5	0194000000
QL 3 SAKG32+70	150	5	0441500000
QL 4 SAKG32+70	150	5	0441600000

Cross-connection saddle	
	Cross-connection saddle
	Connecting sleeve
	Fixing screw

Socket / Test plug	
	Socket
	Test plug

End plate	
	dark brown
	for tropical applications

Width [mm]			
EP 2 SAKG46/35 HP/DBR	2	10	0180700000
EP 2 SAKG46/35 HP/TF/GE	2	10	0180800000

Width [mm]			
EP 1 SAKG32/35 HP/DBR	2	10	0180500000
EP 1 SAKG32/35 HP/TF/GE	2	10	0180600000

Partition / Partition disc	
	dark brown
	for tropical applications
	Partition disc

Width [mm]			
TW SAKG46 HP/DBR/2	2	10	0177100000
TW SAKG46 HP/TF/GE/2	2	10	0179900000

Width [mm]			
TW SAKG28 HP/DBR/2	2	10	0151400000
TW SAKG28 HP/TF/GE/2	2	10	0164600000

Cover / fixing screw (plastic)	
	Cover
	Fixing screw (plastic)

AH 32 SAKG32	5	0326760000
--------------	---	------------

AH 32 SAKG32	5	0326760000
--------------	---	------------

Marking systems

DEK 5

DEK 5

Detailed information on all versions in chapter accessories.

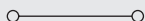
Special terminal - SAKG

SAKG 40 I

95 mm²



40 x 94 x 84.5
232 / 95
10 ... 95



IEC 60947-7-1

IEC	UL	CSA	EN 50019
1000	600	600	
232	195	250	
95	...4/0	AWG 2/0...4/0	
8 / 3			
B12 / 5VA			



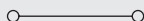
Rated connection	Additional connection
10...16 / 10...95	
10...95 / 10...35	
10...20 (M 10)	
25	

SAKG 40 II

95 mm²



40 x 90 x 53
232 / 95
10 ... 95



IEC 60947-7-1

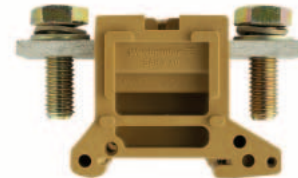
IEC	UL	CSA	EN 50019
1000	600	600	
232	230	250	
95	...4/0	AWG 2/0...4/0	
8 / 3			
/ 5VA			



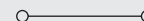
Rated connection	Additional connection
...16 / 10...95	
10...95	
10...20 (M 10)	

SAKG 40 II GW

95 mm²



40 x 90 x 53
232 / 95
10 ... 95



IEC 60947-7-1

IEC	UL	CSA	EN 50019
1000	600	600	
232	230	250	
95	...4/0	AWG 2/0...4/0	
8 / 3			
/ 5VA			



Rated connection	Additional connection
...16 / 10...95	
10...95	
10...20 (M 10)	

Type	Qty.	Order No.
SAKG 40/35 I	5	0637520000

Type	Qty.	Order No.
SAKG 40/35 II	5	0637720000

Type	Qty.	Order No.
SAKG 40/35 II/GW	5	0637820000

Type	Current [A]	Qty.	Order No.
QL 2 SAKG40/35	232	5	0211400000
QL 3 SAKG40/35	232	5	0444900000
QL 4 SAKG40/35	232	5	0445000000

Type	Current [A]	Qty.	Order No.
QL 2 SAKG40/35	232	5	0211400000
QL 3 SAKG40/35	232	5	0444900000
QL 4 SAKG40/35	232	5	0445000000

Type	Current [A]	Qty.	Order No.
QL 2 SAKG40/35	232	5	0211400000
QL 3 SAKG40/35	232	5	0444900000
QL 4 SAKG40/35	232	5	0445000000

Width [mm]			
EP 2 SAKG46/35 HP/DBR	2	10	0180700000
EP 2 SAKG46/35 HP/TF/GE	2	10	0180800000

Width [mm]			
EP 2 SAKG46/35 HP/DBR	2	10	0180700000
EP 2 SAKG46/35 HP/TF/GE	2	10	0180800000

Width [mm]			
EP 2 SAKG46/35 HP/DBR	2	10	0180700000
EP 2 SAKG46/35 HP/TF/GE	2	10	0180800000

Width [mm]			
TW SAKG46 HP/DBR/2	2	10	0177100000
TW SAKG46 HP/TF/GE/2	2	10	0179900000

Width [mm]			
TW SAKG46 HP/DBR/2	2	10	0177100000
TW SAKG46 HP/TF/GE/2	2	10	0179900000

Width [mm]			
TW SAKG46 HP/DBR/2	2	10	0177100000
TW SAKG46 HP/TF/GE/2	2	10	0179900000

AH 40 SAKG40	5	0326860000
--------------	---	------------

AH 40 SAKG40	5	0326860000
--------------	---	------------

AH 40 SAKG40	5	0326860000
--------------	---	------------

DEK 5

DEK 5

DEK 5

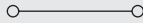
Special terminal - SAKG

SAKG 46 II GW

150 mm²



46 x 106 x 57
309 / 150
16 ... 150



IEC 60947-7-1

IEC	UL	CSA	EN 50019
1000	600	600	
309	285	365	
150	AWG 4/0...300	kcmil 300	
	8 / 3		
	/ 5VA		



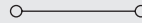
Rated connection	Additional connection
10...16 / 10...150	
10...150	
14...31 (M 12)	

SAKG 54 II

240 mm²



54 x 122 x 60,5
415 / 240
70 ... 240



IEC 60947-7-1

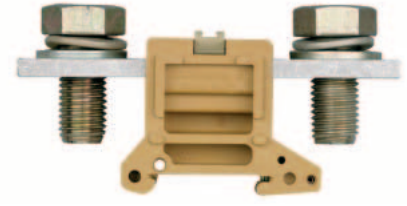
IEC	UL	CSA	EN 50019
1000	600	600	
415	380	600	
240	...500	kcmil 300...500	
	8 / 3		
	/ 5VA		



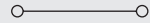
Rated connection	Additional connection
25...60 (M 16)	

SAKG 54 II GW

240 mm²



54 x 122 x 60,5
415 / 240
70 ... 240



IEC 60947-7-1

IEC	UL	CSA	EN 50019
1000	600	600	
415	380	600	
240	...500	kcmil 300...500	
	8 / 3		
	/ 5VA		



Rated connection	Additional connection
25...60 (M 16)	

Type	Qty.	Order No.
SAKG 46/35 II/GW	5	0638020000

Type	Qty.	Order No.
SAKG 54/35 II	5	0638120000

Type	Qty.	Order No.
SAKG 54/35 II/GW	5	0638220000

Type	Current [A]	Qty.	Order No.
QL 2 SAKG46	309	5	0247000000
QL 3 SAKG46	309	5	0444400000
QL 4 SAKG46	309	5	0444500000

Type	Current [A]	Qty.	Order No.
QL 2 SAKG54	415	5	0264400000
QL 3 SAKG54	415	5	0408000000
QL 4 SAKG54	415	5	0247400000

Type	Current [A]	Qty.	Order No.
QL 2 SAKG54	415	5	0264400000
QL 3 SAKG54	415	5	0408000000
QL 4 SAKG54	415	5	0247400000

Width [mm]			
EP 2 SAKG46/35 HP/DBR	2	10	0180700000
EP 2 SAKG46/35 HP/TF/GE	2	10	0180800000

Width [mm]			
EP 2 SAKG46/35 HP/DBR	2	10	0180700000
EP 2 SAKG46/35 HP/TF/GE	2	10	0180800000

Width [mm]			
EP 2 SAKG46/35 HP/DBR	2	10	0180700000
EP 2 SAKG46/35 HP/TF/GE	2	10	0180800000

Width [mm]			
TW SAKG46 HP/DBR/2	2	10	0177100000
TW SAKG46 HP/TF/GE/2	2	10	0179900000

Width [mm]			
TW SAKG46 HP/DBR/2	2	10	0177100000
TW SAKG46 HP/TF/GE/2	2	10	0179900000

Width [mm]			
TW SAKG46 HP/DBR/2	2	10	0177100000
TW SAKG46 HP/TF/GE/2	2	10	0179900000

AH 46 SAKG46	5	0326960000
--------------	---	------------

DEK 5		
-------	--	--

DEK 5		
-------	--	--

DEK 5

DEK 5

DEK 5

Stud Terminal - KST

TS 35 / PA

KST 5/35

10 mm²

KST 6/35

16 mm²

TS 35 / PA

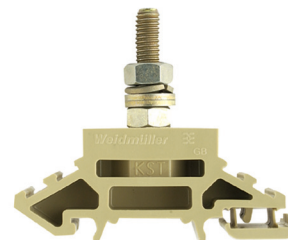
A

When using ATEX certified components in hazardous area applications the installation instructions and the rated data for accessories in the technical appendix must be considered.

Width/Length/Height with TS35x7.5	mm
Max. current / max. cond. cross-section	A/mm ²
Max. clamping range	mm ²

24 x 62.5 x 49.5
57 / 10

24 x 62.5 x 54,5
76 / 16



Technical data

Rated data w. partition, Wemid	
Rated voltage	V
Rated current	A
Rated cross-section	mm ²
Rated impulse voltage / Pollution severity	kV/-
Plug gauge IEC 60-947-1 / flammability class acc. UL 94	
Approvals	

IEC	UL	CSA	EN 50019
1000	600	600	
57	50	65	
10	AWG 12...6	AWG 8...2	
		8 / 3	
		/ V2	

IEC	UL	CSA	EN 50019
1000	600	600	
76	65	80	
16	AWG 12...6	AWG 12...6	
		8 / 3	
		/ V2	

Rated data w. partition, Epoxy resin	
Rated voltage / Rated impulse voltage	V/kV

EN 50124

EN 50124

Clamped cable lug	
DIN 46234 / 1 cable lug per side	mm ²
DIN 46234 / 2 cable lug per side	mm ²
DIN 46234 / 1 cable lug per side	mm ²
DIN 46234 / 2 cable lug per side	mm ²
Tightening torque range	Nm

2.0...4.0

3.0...6.0

Information

Order data

Version
TS 35 x 7.5
TS 35 x 15/2.3

Type	Height	Qty.	Order No.
KST 5/35 M5X18	49,5	25	9508230000
KST 5/35 M5X18	49,5	25	9528300000

Type	Height	Qty.	Order No.
KST 6/35 M6X22	54,5	25	9506940000
KST 6/35 M6X22	62	25	9528310000

Information

Accessories

Cross-connection
2-pole
3-pole

Type	Current [A]	Qty.	Order No.
QL 2 KST6		5	9501350000

Type	Current [A]	Qty.	Order No.
QL 2 KST6		5	9501350000

Partition	W/L/H TS 35 [mm]
right	TW KST5-12 RE/NO 160/HM 10 1718530000
left	TW KST5-12 LI/NO 160/HM 10 1752800000

Type	Current [A]	Qty.	Order No.
TW KST5-12 RE/NO 160/HM		10	1718530000
TW KST5-12 LI/NO 160/HM		10	1752800000

Type	Current [A]	Qty.	Order No.
TW KST5-12 RE/NO 160/HM		10	1718530000
TW KST5-12 LI/NO 160/HM		10	1752800000

Marking systems

DEK 5

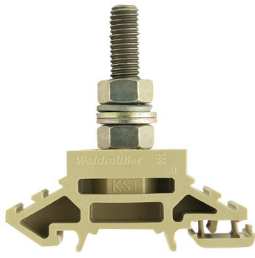
DEK 5

For detailed information on other accessories and applications see "Accessories"

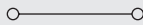
Stud Terminal - KST

KST 8/35

35 mm²



24 x 62.5 x 64,5
125 / 35



IEC	UL	CSA	EN 50019
1000	600	600	
125	115	130	
35	AWG 12... 2	AWG 12... 2	
	8 / 3		
	/ V2		



EN 50124

6.0...12

Type	Height	Qty.	Order No.
KST 8/35 M8X30	64,5	25	9506950000
KST 8/35 M8X30	72	25	9528320000

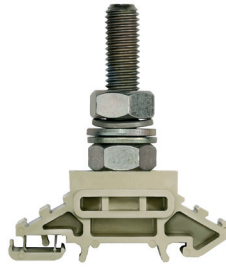
Type	Current [A]	Qty.	Order No.
QL 2 KST8		5	9501360000

W/L/H TS 35 [mm]			
TW KST5-12 RE/NO 160/HM	10		1718530000
TW KST5-12 LI/NO 160/HM	10		1752800000

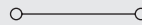
DEK 5

KST 10/35

70 mm²



35 x 62.5 x 74,5
192 / 70



IEC	UL	CSA	EN 50019
1000	600	600	
192	175	200	
70	AWG 12... 2/0	AWG 12... 2/0	
	8 / 3		
	/ V2		



EN 50124

10...20

Type	Height	Qty.	Order No.
KST 10/35 M10X39	74,5	20	9506960000
KST 10/35 M10X39	82	20	9528330000

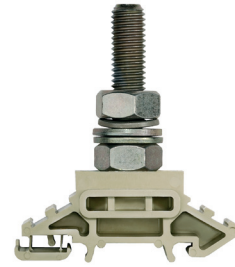
Type	Current [A]	Qty.	Order No.
QL 2 KST10		5	9501370000

W/L/H TS 35 [mm]			
TW KST5-12 RE/NO 160/HM	10		1718530000
TW KST5-12 LI/NO 160/HM	10		1752800000

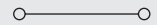
DEK 5

KST 12/35

95 mm²



34 x 62.5 x 74,5
232 / 95



IEC	UL	CSA	EN 50019
1000	600	600	
232	200	250	
95	AWG 12... 3		
	8 / 3		
	/ V2		



EN 50124

14...31

Type	Height	Qty.	Order No.
KST 12/35 M12X37	78	20	9506970000
KST 12/35 M12X37	74,5	20	9528340000

Type	Current [A]	Qty.	Order No.
QL 2 KST12		5	9501380000

W/L/H TS 35 [mm]			
TW KST5-12 RE/NO 160/HM	10		1718530000
TW KST5-12 LI/NO 160/HM	10		1752800000

DEK 5

Modular terminals with electronic components

With electronic components TS 35 / PA

When using ATEX certified components in hazardous area applications the installation instructions and the rated data for accessories in the technical appendix must be considered.

Width/Length/Height with TS35x7.5	mm
Max. current / max. cond. cross-section	A/mm ²
Max. clamping range	mm ²

Technical data

Rated data	
Rated voltage	V
Rated current	A
Rated cross-section	mm ²
Rated impulse voltage / Pollution severity	kV/-
Plug gauge IEC 60-947-1 / flammability class acc. UL 94	
Approvals	

Electronic built-in components

Diode current / diode voltage	V / A
voltage LED / current LED / polarity	V / mA / -
Resistance / Varistor	-/V

Clampable conductors (H05V/H07V)

Solid / stranded	mm ²
Flexible / flexible w. wire end ferrule	mm ²
Tightening torque range (clamping screw)	Nm
Stripping length / blade size	mm / -


Information

Order data

Version	
Terminal components	LED red
see circuit diagram above	LED green
	Neon lamp
	Neon lamp

Information

Accessories

Cross-connection, screwable	
	2-pole
	3-pole
	4-pole
	10-pole

External cross-connection	
	2-pole
	3-pole
	4-pole

End plate	
	beige

Socket	

Test plug	

Connecting sleeve	

Cross-connection saddle	

Fixing screw / Partition disc	
Fixing screw	
Partition disc	

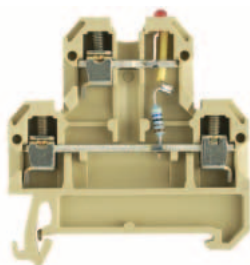
Marking systems	

For detailed information on other accessories and applications see "Accessories"

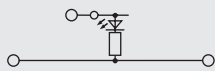
DK 4 LD/1

4 mm²

DC voltage indicator



6 x 50 x 52.5
10 / 4
0.33 ... 4



IEC 60947-7-1

IEC	UL	CSA	EN 50019
24			
10			
4			
		1 / 3	
		A3 / V2	



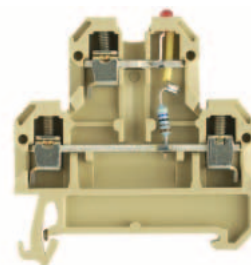
24 / 5

Rated connection	Additional connection
0.5...4 / 0.5...4	
0.5...4 / 0.5...4	
0.5...1.0 (M3)	
9 / 3.5 x 0.6	

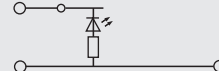
DK 4 LD/2

4 mm²

DC voltage indicator



6 x 50 x 52.5
10 / 4
0.33 ... 4



IEC 60947-7-1

IEC	UL	CSA	EN 50019
24			
10			
4			
		1 / 3	
		A3 / V2	



24 / 5

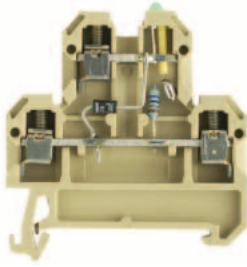
Rated connection	Additional connection
0.5...4 / 0.5...4	
0.5...4 / 0.5...4	
0.5...1.0 (M3)	
9 / 3.5 x 0.6	

Modular terminals with electronic components

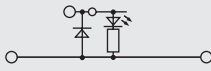
DK 4 LD/3

4 mm²

DC voltage indicator



6 x 50 x 52.5
10 / 4
0.33 ... 4



IEC 60947-7-1

IEC	UL	CSA	EN 50019
24			
10			
4			
	1 / 3		
	A3 / V2		
Ⓢ			
24 / 5			

Rated connection

Additional connection

0.5...4 / 0.5...4
0.5...4 / 0.5...4
0.5...1.0 (M3)
9 / 3.5 x 0.6

Type	Voltage	Qty.	Order No.
DK 4/35 LD ROT 24VDC	24 VDC	25	0210260000
DK 4/35 LD GR 24VDC	24 VDC	25	0210460000

Type	Current [A]	Qty.	Order No.
Q 2 AKZ4	32	50	0336400000
Q 3 AKZ4	32	50	0336500000
Q 4 AKZ4	32	50	0336600000

Current [A]			
QB 2 WI RA6 IS	27	50	0482700000
QB 3 WI RA6 IS	27	50	0482800000
QB 4 WI RA6 IS	27	50	0482900000

AP DK4 20 0359260000

STB 8.5/D4/2.3/M2.5 AKZ 50 0215700000

PS 2.3 RT 20 0180400000

VH 10/4/2.8 AKZ4 50 0446600000

VL 2 AKZ4/DK4 50 0446700000

BFSC M2.5X14 SAKD2.5N 100 0266800000

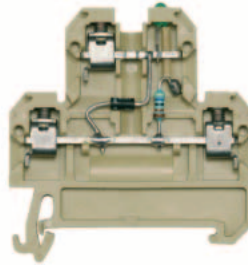
TSCH 4 AKZ4 100 0363360000

DEK 6

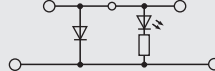
DK 4 LD/4

4 mm²

DC voltage indicator



6 x 50 x 52.5
10 / 4
0.33 ... 4



IEC 60947-7-1

IEC	UL	CSA	EN 50019
24			
10			
4			
	1 / 3		
	A3 / V2		
Ⓢ			
24 / 5			

Rated connection

Additional connection

0.5...4 / 0.5...4
0.5...4 / 0.5...4
0.5...1.0 (M3)
9 / 3.5 x 0.6

Type	Voltage	Qty.	Order No.
DK 4/35 LD ROT 24VDC	24 VDC	25	0209860000
DK 4/35 LD GR 24VDC	24 VDC	25	0210060000

Type	Current [A]	Qty.	Order No.
Q 2 AKZ4	32	50	0336400000
Q 3 AKZ4	32	50	0336500000
Q 4 AKZ4	32	50	0336600000

Current [A]			
QB 2 WI RA6 IS	27	50	0482700000
QB 3 WI RA6 IS	27	50	0482800000
QB 4 WI RA6 IS	27	50	0482900000

AP DK4 20 0359260000

STB 8.5/D4/2.3/M2.5 AKZ 50 0215700000

PS 2.3 RT 20 0180400000

VH 10/4/2.8 AKZ4 50 0446600000

VL 2 AKZ4/DK4 50 0446700000

BFSC M2.5X14 SAKD2.5N 100 0266800000

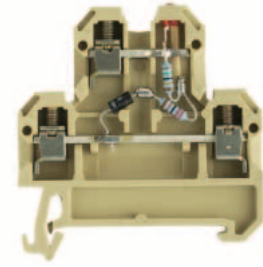
TSCH 4 AKZ4 100 0363360000

DEK 6

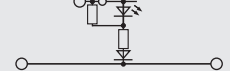
DK 4 LD/5

4 mm²

AC voltage indicator



6 x 50 x 52.5
10 / 4
0.33 ... 4



IEC 60947-7-1

IEC	UL	CSA	EN 50019
24			
10			
4			
	1 / 3		
	A3 / V2		
Ⓢ			
24 / 5			

Rated connection

Additional connection

0.5...4 / 0.5...4
0.5...4 / 0.5...4
0.5...1.0 (M3)
9 / 3.5 x 0.6

Type	Voltage	Qty.	Order No.
DK 4/35 LD 1D ROT 24VAC	24 VAC	25	0395960000
DK 4/35 LD 1D 48VAC	48 VAC	25	0396060000

Type	Current [A]	Qty.	Order No.
Q 2 AKZ4	32	50	0336400000
Q 3 AKZ4	32	50	0336500000
Q 4 AKZ4	32	50	0336600000

Current [A]			
QB 2 WI RA6 IS	27	50	0482700000
QB 3 WI RA6 IS	27	50	0482800000
QB 4 WI RA6 IS	27	50	0482900000

AP DK4 20 0359260000

STB 8.5/D4/2.3/M2.5 AKZ 50 0215700000

PS 2.3 RT 20 0180400000

VH 10/4/2.8 AKZ4 50 0446600000

VL 2 AKZ4/DK4 50 0446700000

BFSC M2.5X14 SAKD2.5N 100 0266800000

TSCH 4 AKZ4 100 0363360000

DEK 6

Modular terminals with electronic components

With electronic components TS 35 / PA

When using ATEX certified components in hazardous area applications the installation instructions and the rated data for accessories in the technical appendix must be considered.

Width/Length/Height with TS35x7.5	mm
Max. current / max. cond. cross-section	A/mm ²
Max. clamping range	mm ²


Technical data

Rated data	
Rated voltage	V
Rated current	A
Rated cross-section	mm ²
Rated impulse voltage / Pollution severity	kV/-
Plug gauge IEC 60-947-1 / flammability class acc. UL 94	
Approvals	
Electronic built-in components	
Diode current / diode voltage	V / A
voltage LED / current LED / polarity	V / mA / -
Resistance / Varistor	-/V
Clampable conductors (H05V/H07V)	
Solid / stranded	mm ²
Flexible / flexible w. wire end ferrule	mm ²
Tightening torque range (clamping screw)	Nm
Stripping length / blade size	mm / -
Information	

Order data

Version	Terminal components
	LED red
	LED green
	Neon lamp
	Neon lamp
Information	

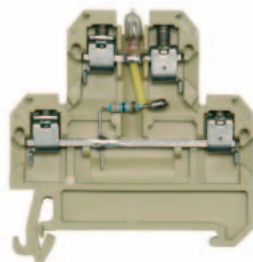
Accessories

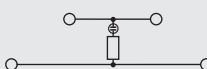
Cross-connection, screwable	
	2-pole
	3-pole
	4-pole
	10-pole
External cross-connection	
	2-pole
	3-pole
	4-pole
End plate	
	beige
Socket	
Test plug	
Connecting sleeve	
Cross-connection saddle	
Fixing screw / Partition disc	
	Fixing screw
	Partition disc
Marking systems	
For detailed information on other accessories and applications see "Accessories"	

DK 4 GL


4 mm²

AC voltage indicator



6 x 50 x 52.5	
10 / 4	
0.33 ... 4	

IEC 60947-7-1

IEC	UL	CSA	EN 50019
230			
10			
4			
	1 / 3		
	A3 / V2		
			
230 / 5			
Rated connection		Additional connection	
0.5...4 / 0.5...4			
0.5...4 / 0.5...4			
0.5...1.0 (M3)			
9 / 3.5 x 0.6			
Information			

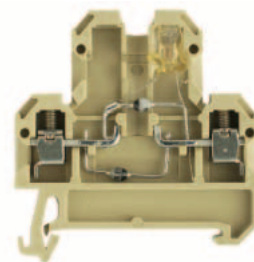
Type	Voltage	Qty.	Order No.
DK 4/35 GL 330K 230VAC	230 VAC	25	0663160000
DK 4/35 GL 100K 115VAC	115 VAC	25	0396260000
Information			

Type	Current [A]	Qty.	Order No.
Q 2 AKZ4	32	50	0336400000
Q 3 AKZ4	32	50	0336500000
Q 4 AKZ4	32	50	0336600000
Current [A]			
QB 2 WI RA6 IS	27	50	0482700000
QB 3 WI RA6 IS	27	50	0482800000
QB 4 WI RA6 IS	27	50	0482900000
AP DK4		20	0359260000
STB 8.5/D4/2.3/M2.5 AKZ		50	0215700000
PS 2.3 RT		20	0180400000
VH 10/4/2.8 AKZ4		50	0446600000
VL 2 AKZ4/DK4		50	0446700000
BFSC M2.5X14 SAKD2.5N		100	0266800000
TSCH 4 AKZ4		100	0363360000
DEK 6			
Information			


DK 4 GL I

4 mm²

Current indicator



6 x 50 x 52.5	
/ 4	
0.33 ... 4	

IEC	UL	CSA	EN 50019
250			
4			
	1 / 3		
	A3 / V2		
			
250 / 1			
Rated connection		Additional connection	
0.5...4 / 0.5...4			
0.5...4 / 0.5...4			
0.5...1.0 (M3)			
9 / 3.5 x 0.6			
Information			

Type	Voltage	Qty.	Order No.
DK 4/35 GL 1D 11,0A	250 VAC	25	1111160000
Information			

Type	Current [A]	Qty.	Order No.
Q 2 AKZ4	32	50	0336400000
Q 3 AKZ4	32	50	0336500000
Q 4 AKZ4	32	50	0336600000
Q 10 AKZ4	32	20	0368600000
Current [A]			
QB 2 WI RA6 IS	27	50	0482700000
QB 3 WI RA6 IS	27	50	0482800000
QB 4 WI RA6 IS	27	50	0482900000
AP DK4		20	0359260000
STB 8.5/D4/2.3/M2.5 AKZ		50	0215700000
PS 2.3 RT		20	0180400000
VH 10/4/2.8 AKZ4		50	0446600000
VL 2 AKZ4/DK4		50	0446700000
BFSC M2.5X14 SAKD2.5N		100	0266800000
TSCH 4 AKZ4		100	0363360000
DEK 6			
Information			

Modular terminals with electronic components

With electronic components TS 35 / PA

When using ATEX certified components in hazardous area applications the installation instructions and the rated data for accessories in the technical appendix must be considered.

Width/Length/Height with TS35x7.5	mm
Max. current / max. cond. cross-section	A/mm ²
Max. clamping range	mm ²

Technical data

Rated data	
Rated voltage	V
Rated current	A
Rated cross-section	mm ²
Rated impulse voltage / Pollution severity	kV/-
Plug gauge IEC 60-947-1 / flammability class acc. UL 94	
Approvals	

Electronic built-in components	
Diode current / diode voltage	V / A
voltage LED / current LED / polarity	V / mA / -
Resistance / Varistor	-/V

Clampable conductors (H05V/H07V)	
Solid / stranded	mm ²
Flexible / flexible w. wire end ferrule	mm ²
Tightening torque range (clamping screw)	Nm
Stripping length / blade size	mm / -


Information

Order data

Version	
Terminal components	LED red
see circuit diagram above	LED green
	Neon lamp
	Neon lamp

Information

Accessories

Cross-connection, screwable	
	2-pole
	3-pole
	4-pole
	10-pole

External cross-connection	
	2-pole
	3-pole
	4-pole

End plate	
	beige

Socket	

Test plug	

Connecting sleeve	

Cross-connection saddle	

Fixing screw / Partition disc	
Fixing screw	
Partition disc	

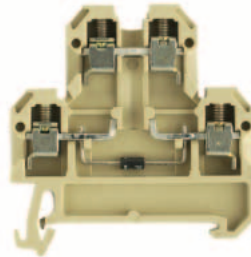
Marking systems	

For detailed information on other accessories and applications see "Accessories"

DK 4 D/1

4 mm²

Diode terminal, e.g. as protection against polarity reversal



6 x 50 x 52.5	
10 / 4	
0.33 ... 4	

IEC	UL	CSA	EN 50019
380		380	
10	1		
4		AWG 22... 12	
		/ 3	
		A3 / V2	

Approvals	
1000 / 1	
	/ 1000

Rated connection	Additional connection
0.5...4 / 0.5...4	
0.5...4 / 0.5...4	
0.5...0.8 (M3)	
9 / 3.5 x 0.6	

Type	Voltage	Qty.	Order No.
------	---------	------	-----------

DK 4/35 1D GET.SCH.	380 V	25	0396360000
---------------------	-------	----	------------

Type	Current [A]	Qty.	Order No.
Q 2 AKZ4	32	50	0336400000
Q 3 AKZ4	32	50	0336500000
Q 4 AKZ4	32	50	0336600000

Current [A]			
QB 2 WI RA6 IS	27	50	0482700000
QB 3 WI RA6 IS	27	50	0482800000
QB 4 WI RA6 IS	27	50	0482900000

AP DK4	20	0359260000
--------	----	------------

STB 8.5/D4/2.3/M2.5 AKZ	50	0215700000
-------------------------	----	------------

PS 2.3 RT	20	0180400000
-----------	----	------------

VH 10/4/2.8 AKZ4	50	0446600000
------------------	----	------------

VL 2 AKZ4/DK4	50	0446700000
---------------	----	------------

BFSC M2.5X14 SAKD2.5N	100	0266800000
-----------------------	-----	------------

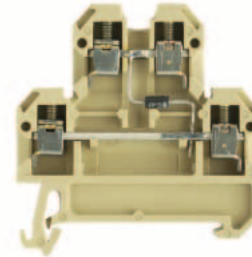
TSCH 4 AKZ4	100	0363360000
-------------	-----	------------

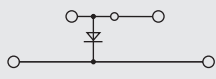
DEK 6		
-------	--	--

DK 4 D/2

4 mm²

suppressor circuit for relay and magnetic valve (DC)



6 x 50 x 52.5	
10 / 4	
0.33 ... 4	

IEC	UL	CSA	EN 50019
380		380	
10	1		
4		AWG 22... 12	
		/ 3	
		A3 / V2	

Approvals	
1000 / 1	
	/ 1000

Rated connection	Additional connection
0.5...4 / 0.5...4	
0.5...4 / 0.5...4	
0.5...0.8 (M3)	
9 / 3.5 x 0.6	

Type	Voltage	Qty.	Order No.
------	---------	------	-----------

DK 4/35 1D A1	380 V	25	0538960000
DK 4/35 1D A1	380 V	25	0538980000

Type	Current [A]	Qty.	Order No.
Q 2 AKZ4	32	50	0336400000
Q 3 AKZ4	32	50	0336500000
Q 4 AKZ4	32	50	0336600000

Current [A]			
QB 2 WI RA6 IS	27	50	0482700000
QB 3 WI RA6 IS	27	50	0482800000
QB 4 WI RA6 IS	27	50	0482900000

AP DK4	20	0359260000
--------	----	------------

STB 8.5/D4/2.3/M2.5 AKZ	50	0215700000
-------------------------	----	------------

PS 2.3 RT	20	0180400000
-----------	----	------------

VH 10/4/2.8 AKZ4	50	0446600000
------------------	----	------------

VL 2 AKZ4/DK4	50	0446700000
---------------	----	------------

BFSC M2.5X14 SAKD2.5N	100	0266800000
-----------------------	-----	------------

TSCH 4 AKZ4	100	0363360000
-------------	-----	------------

DEK 6		
-------	--	--

Modular terminals with electronic components

With electronic components TS 35 / PA

When using ATEX certified components in hazardous area applications the installation instructions and the rated data for accessories in the technical appendix must be considered.

Width/Length/Height with TS35x7.5	mm
Max. current / max. cond. cross-section	A/mm ²
Max. clamping range	mm ²

Technical data

Rated data	
Rated voltage	V
Rated current	A
Rated cross-section	mm ²
Rated impulse voltage / Pollution severity	kV/-
Plug gauge IEC 60-947-1 / flammability class acc. UL 94	
Approvals	

Electronic built-in components	
Diode current / diode voltage	V / A
voltage LED / current LED / polarity	V / mA / -
Resistance / Varistor	-/V

Clampable conductors (H05V/H07V)	
Solid / stranded	mm ²
Flexible / flexible w. wire end ferrule	mm ²
Tightening torque range (clamping screw)	Nm
Stripping length / blade size	mm / -


Information

Order data

Version	
Terminal components	LED red
see circuit diagram above	LED green
	Neon lamp
	Neon lamp

Information

Accessories

Cross-connection, screwable	
	2-pole
	3-pole
	4-pole
	10-pole

External cross-connection	
	2-pole
	3-pole
	4-pole

End plate	
	beige

Socket	

Test plug	

Connecting sleeve	

Cross-connection saddle	

Fixing screw / Partition disc	
Fixing screw	
Partition disc	

Marking systems	

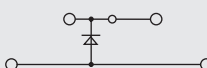
For detailed information on other accessories and applications see "Accessories"

DK 4 D/3

4 mm²

suppressor circuit for relay and magnetic valve (DC)



6 x 50 x 52.5	
10 / 4	
0.33 ... 4	

IEC	UL	CSA	EN 50019
380			
10			
4			
		/ 3	
		A3 / V2	

Rated connection		Additional connection	
1000 / 1			
	/ 1000		

Rated connection		Additional connection	
0.5...4 / 0.5...4			
0.5...4 / 0.5...4			
0.5...0.8 (M3)			
9 / 3.5 x 0.6			

Type	Voltage	Qty.	Order No.
DK 4/35 1D A2	380 V	25	0538860000
DK 4/35 1D A2	380 V	25	0538880000

Information

Type	Current [A]	Qty.	Order No.
Q 2 AKZ4	32	50	0336400000
Q 3 AKZ4	32	50	0336500000
Q 4 AKZ4	32	50	0336600000

Current [A]			
QB 2 WI RA6 IS	27	50	0482700000
QB 3 WI RA6 IS	27	50	0482800000
QB 4 WI RA6 IS	27	50	0482900000

AP DK4			
		20	0359260000

STB 8.5/D4/2.3/M2.5 AKZ			
		50	0215700000

PS 2.3 RT			
		20	0180400000

VH 10/4/2.8 AKZ4			
		50	0446600000

VL 2 AKZ4/DK4			
		50	0446700000

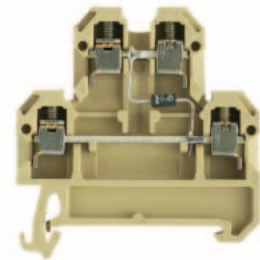
BFSC M2.5X14 SAKD2.5N			
		100	0266800000
TSCH 4 AKZ4			
		100	0363360000

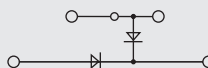
DEK 6			

DK 4 D/4

4 mm²

Diodes terminal for lamp-test-circuits



6 x 50 x 52.5	
10 / 4	
0.33 ... 4	

IEC	UL	CSA	EN 50019
380			
10			
4			
		/ 3	
		A3 / V2	

Rated connection		Additional connection	
1000 / 1			
	/ 1000		

Rated connection		Additional connection	
0.5...4 / 0.5...4			
0.5...4 / 0.5...4			
0.5...0.8 (M3)			
9 / 3.5 x 0.6			

Type	Voltage	Qty.	Order No.
DK 4/35 2D GET.SCH. A1	380 V	25	0396600000

Information

Type	Current [A]	Qty.	Order No.
Q 2 AKZ4	32	50	0336400000
Q 3 AKZ4	32	50	0336500000
Q 4 AKZ4	32	50	0336600000

Current [A]			
QB 2 WI RA6 IS	27	50	0482700000
QB 3 WI RA6 IS	27	50	0482800000
QB 4 WI RA6 IS	27	50	0482900000

AP DK4			
		20	0359260000

STB 8.5/D4/2.3/M2.5 AKZ			
		50	0215700000

PS 2.3 RT			
		20	0180400000

VH 10/4/2.8 AKZ4			
		50	0446600000

VL 2 AKZ4/DK4			
		50	0446700000

BFSC M2.5X14 SAKD2.5N			
		100	0266800000
TSCH 4 AKZ4			
		100	0363360000

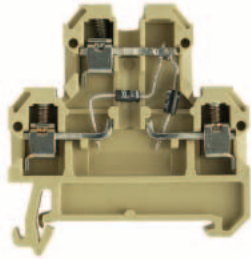
DEK 6			

Modular terminals with electronic components

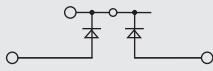
DK 4 D/5

4 mm²

Diodes terminal for lamp-test-circuits



6 x 50 x 52.5
10 / 4
0.33 ... 4



IEC	UL	CSA	EN 50019
380			
10			
4			



1000 / 1

/ 1000

Rated connection	Additional connection
0.5...4 / 0.5...4	
0.5...4 / 0.5...4	
0.5...0.8 (M3)	
9 / 3.5 x 0.6	

Type	Voltage	Qty.	Order No.
DK 4/35 2D GET.SCH. A2	380 V	25	0396860000

Type	Current [A]	Qty.	Order No.
Q 2 AKZ4	32	50	0336400000
Q 3 AKZ4	32	50	0336500000
Q 4 AKZ4	32	50	0336600000

	Current [A]	Qty.	Order No.
QB 2 WI RA6 IS	27	50	0482700000
QB 3 WI RA6 IS	27	50	0482800000
QB 4 WI RA6 IS	27	50	0482900000

AP DK4	20	0359260000
--------	----	------------

STB 8.5/D4/2.3/M2.5 AKZ	50	0215700000
-------------------------	----	------------

PS 2.3 RT	20	0180400000
-----------	----	------------

VH 10/4/2.8 AKZ4	50	0446600000
------------------	----	------------

VL 2 AKZ4/DK4	50	0446700000
---------------	----	------------

BFSC M2.5X14 SAKD2.5N	100	0266800000
-----------------------	-----	------------

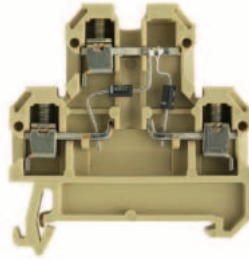
TSCH 4 AKZ4	100	0363360000
-------------	-----	------------

DEK 6		
-------	--	--

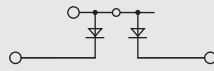
DK 4 D/6

4 mm²

Diodes terminal for lamp-test-circuits



6 x 50 x 52.5
10 / 4
0.33 ... 4



IEC	UL	CSA	EN 50019
380			
10			
4			



1000 / 1

/ 1000

Rated connection	Additional connection
0.5...4 / 0.5...4	
0.5...4 / 0.5...4	
0.5...0.8 (M3)	
9 / 3.5 x 0.6	

Type	Voltage	Qty.	Order No.
DK 4/35 2D GET.SCH. A1	380 V	25	0396760000

Type	Current [A]	Qty.	Order No.
Q 2 AKZ4	32	50	0336400000
Q 3 AKZ4	32	50	0336500000
Q 4 AKZ4	32	50	0336600000

	Current [A]	Qty.	Order No.
QB 2 WI RA6 IS	27	50	0482700000
QB 3 WI RA6 IS	27	50	0482800000
QB 4 WI RA6 IS	27	50	0482900000

AP DK4	20	0359260000
--------	----	------------

STB 8.5/D4/2.3/M2.5 AKZ	50	0215700000
-------------------------	----	------------

PS 2.3 RT	20	0180400000
-----------	----	------------

VH 10/4/2.8 AKZ4	50	0446600000
------------------	----	------------

VL 2 AKZ4/DK4	50	0446700000
---------------	----	------------

BFSC M2.5X14 SAKD2.5N	100	0266800000
-----------------------	-----	------------

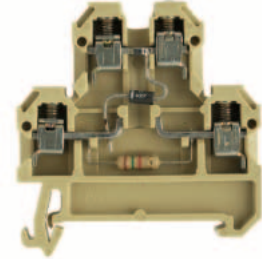
TSCH 4 AKZ4	100	0363360000
-------------	-----	------------

DEK 6		
-------	--	--

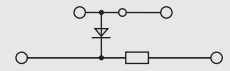
DK 4 D/7

4 mm²

Diodes terminal for lamp-test-circuits with multiplier



6 x 50 x 52.5
10 / 4
0.33 ... 4



IEC	UL	CSA	EN 50019
24			
10			
4			



/ 1

Rated connection	Additional connection
0.5...4 / 0.5...4	
0.5...4 / 0.5...4	
0.5...0.8 (M3)	
9 / 3.5 x 0.6	

Type	Voltage	Qty.	Order No.
DK 4/35 1D 1K5 GET.SCH	24 V	25	0396960000

Type	Current [A]	Qty.	Order No.
Q 2 AKZ4	32	50	0336400000
Q 3 AKZ4	32	50	0336500000
Q 4 AKZ4	32	50	0336600000

	Current [A]	Qty.	Order No.
QB 2 WI RA6 IS	27	50	0482700000
QB 3 WI RA6 IS	27	50	0482800000
QB 4 WI RA6 IS	27	50	0482900000

AP DK4	20	0359260000
--------	----	------------

STB 8.5/D4/2.3/M2.5 AKZ	50	0215700000
-------------------------	----	------------

PS 2.3 RT	20	0180400000
-----------	----	------------

VH 10/4/2.8 AKZ4	50	0446600000
------------------	----	------------

VL 2 AKZ4/DK4	50	0446700000
---------------	----	------------

BFSC M2.5X14 SAKD2.5N	100	0266800000
-----------------------	-----	------------

TSCH 4 AKZ4	100	0363360000
-------------	-----	------------

DEK 6		
-------	--	--

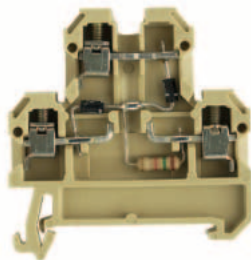
Modular terminals with electronic components

With electronic components TS 35 / PA

DK 4 D/8

4 mm²

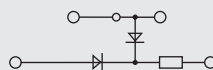
Diodes terminal for lamp-test-circuits with multiplier



When using ATEX certified components in hazardous area applications the installation instructions and the rated data for accessories in the technical appendix must be considered.

Width/Length/Height with TS35x7.5	mm
Max. current / max. cond. cross-section	A/mm ²
Max. clamping range	mm ²

6 x 50 x 52.5
10 / 4
0.33 ... 4



Technical data

Rated data	
Rated voltage	V
Rated current	A
Rated cross-section	mm ²
Rated impulse voltage / Pollution severity	kV/-
Plug gauge IEC 60-947-1 / flammability class acc. UL 94	
Approvals	

Electronic built-in components	
Diode current / diode voltage	V / A
voltage LED / current LED / polarity	V / mA / -
Resistance / Varistor	-/V

Clampable conductors (H05V/H07V)	
Solid / stranded	mm ²
Flexible / flexible w. wire end ferrule	mm ²
Tightening torque range (clamping screw)	Nm
Stripping length / blade size	mm / -

Information

IEC	UL	CSA	EN 50019
24			
10			
4			
		/ 3	
		A3 / V2	

/ 1

Rated connection	Additional connection
0.5...4 / 0.5...4	
0.5...4 / 0.5...4	
0.5...0.8 (M3)	
9 / 3.5 x 0.6	


Order data

Version	
Terminal components	LED red
see circuit diagram above	LED green
	Neon lamp
	Neon lamp

Information

Type	Voltage	Qty.	Order No.
DK 4/35 2D 1K5	24 V	25	0181560000

Accessories

Cross-connection, screwable	
	2-pole
	3-pole
	4-pole
(Q)	10-pole

External cross-connection	
	2-pole
	3-pole
	4-pole

End plate	
	beige

Socket

Test plug

Connecting sleeve

Cross-connection saddle

Fixing screw / Partition disc	
Fixing screw	
Partition disc	

Marking systems

For detailed information on other accessories and applications see "Accessories"

Type	Current [A]	Qty.	Order No.
Q 2 AKZ4	32	50	0336400000
Q 3 AKZ4	32	50	0336500000
Q 4 AKZ4	32	50	0336600000

Current [A]			
QB 2 WI RA6 IS	27	50	0482700000
QB 3 WI RA6 IS	27	50	0482800000
QB 4 WI RA6 IS	27	50	0482900000

AP DK4	20	0359260000
--------	----	------------

STB 8.5/D4/2.3/M2.5 AKZ	50	0215700000
-------------------------	----	------------

PS 2.3 RT	20	0180400000
-----------	----	------------

VH 10/4/2.8 AKZ4	50	0446600000
------------------	----	------------

VL 2 AKZ4/DK4	50	0446700000
---------------	----	------------

BFSC M2.5X14 SAKD2.5N	100	0266800000
-----------------------	-----	------------

TSCH 4 AKZ4	100	0363360000
-------------	-----	------------

DEK 6		
-------	--	--

Modular terminals with electronic components

With electronic components TS 35 / PA

When using ATEX certified components in hazardous area applications the installation instructions and the rated data for accessories in the technical appendix must be considered.

Width/Length/Height with TS35x7.5	mm
Max. current / max. cond. cross-section	A/mm ²
Max. clamping range	mm ²

Technical data

Rated data	
Rated voltage	V
Rated current	A
Rated cross-section	mm ²
Rated impulse voltage / Pollution severity	kV/-
Plug gauge IEC 60-947-1 / flammability class acc. UL 94	
Approvals	

Electronic built-in components

Diode current / diode voltage	V / A
voltage LED / current LED / polarity	V / mA / -
Resistance / Varistor	-/V

Clampable conductors (H05V/H07V)

Solid / stranded	mm ²
Flexible / flexible w. wire end ferrule	mm ²
Tightening torque range (clamping screw)	Nm
Stripping length / blade size	mm / -

Information

Order data

Version	
Terminal components	LED red
see circuit diagram above	LED green
	Neon lamp
	Neon lamp

Information

Accessories

Cross-connection, screwable

	2-pole	
	3-pole	
	4-pole	
(Q)	10-pole	

External cross-connection

	2-pole	
	3-pole	
	4-pole	

End plate

	beige	
--	-------	--

Socket

--	--	--

Test plug

--	--	--

Connecting sleeve

--	--	--

Cross-connection saddle

--	--	--

Fixing screw / Partition disc

	Fixing screw	
	Partition disc	

Marking systems

--	--	--

For detailed information on other accessories and applications see "Accessories"

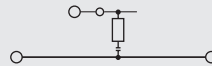
DK 4 RC

4 mm²

Terminal with RC



18 x 650 x 52.5
10 / 4
0.33 ... 4



IEC	UL	CSA	EN 50019
250			
10			
4			

Rated connection

0.5...4 / 0.5...4
0.5...4 / 0.5...2.5
0.5...0.8 (M 3)
9 / 3.5 x 0.6

Type	Voltage	Qty.	Order No.
DK 4/35 RC 220R/220N	230 V	5	0053160000

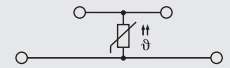
DK 4 PT 100

4 mm²

Diodes terminal for central control systems



6 x 65 x 53.5
10 / 4
0.33 ... 4



IEC	UL	CSA	EN 50019
10			
4			
		/ 3	
		A3 / V2	

Rated connection

0.5...4 / 0.5...4
0.5...4 / 0.5...2.5
0.4...0.7 (M 2.5)
6 / 3.5 x 0.6

Type	Voltage	Qty.	Order No.
DKT 4/35 PT100		10	8014720000

Type	Current [A]	Qty.	Order No.
Q 2 AKZ4	32	50	0336400000
Q 3 AKZ4	32	50	0336500000
Q 4 AKZ4	32	50	0336600000
Q 10 AKZ4	32	20	0368600000

Current [A]			

Type	Current [A]	Qty.	Order No.
AP DK4		20	0359260000
STB 8.5/D4/2.3/M2.5 AKZ		50	0215700000
PS 2.3 RT		20	0180400000
VH 10/4/2.8 AKZ4		50	0446600000
VL 2 AKZ4/DK4		50	0446700000
BFSC M2.5X14 SAKD2.5N		100	0266800000

DEK 6			
-------	--	--	--

Type	Current [A]	Qty.	Order No.
Q 2 AKZ4	32	50	0336400000
Q 3 AKZ4	32	50	0336500000
Q 4 AKZ4	32	50	0336600000

Current [A]			
QB 2 WI RA6 IS	27	50	0482700000
QB 3 WI RA6 IS	27	50	0482800000
QB 4 WI RA6 IS	27	50	0482900000

Type	Current [A]	Qty.	Order No.
AP DKT4 PA		20	0687560000
STB 8.5/D4/2.3/M2.5 AKZ		50	0215700000
PS 2.3 RT		20	0180400000
TSCH 4 AKZ4		100	0363360000

DEK 6			
-------	--	--	--

